

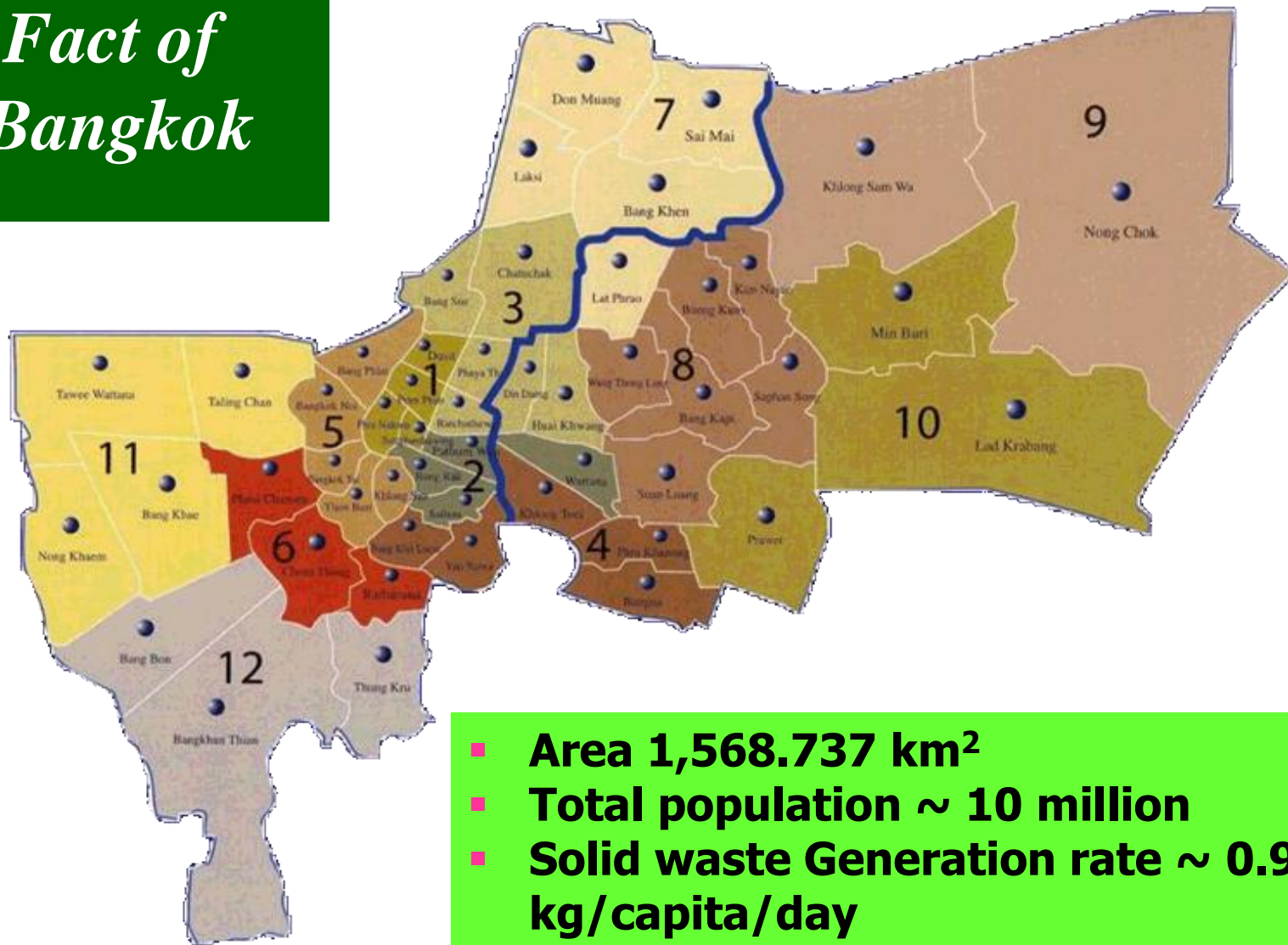


# **Solid Waste Management in Bangkok**



**Department of Environment  
Bangkok Metropolitan Administration (BMA)**

# *Fact of Bangkok*



- **Area 1,568.737 km<sup>2</sup>**
- **Total population ~ 10 million**
- **Solid waste Generation rate ~ 0.98 kg/capita/day**
- **Budget for SWM more than 8,600 million JPY/annual**



# Responsibility for SWM of BMA

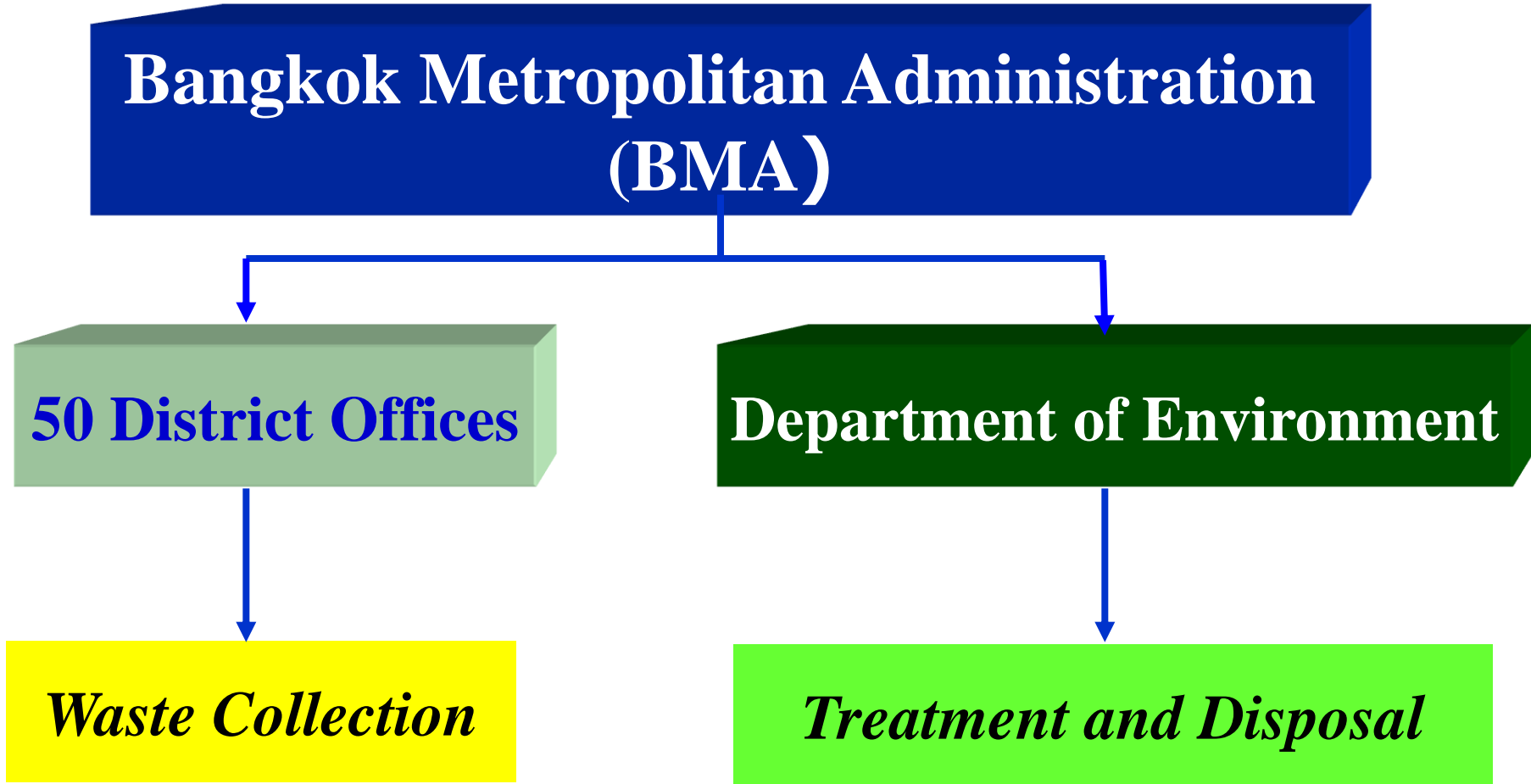
**Bangkok Metropolitan Administration  
(BMA)**

**50 District Offices**

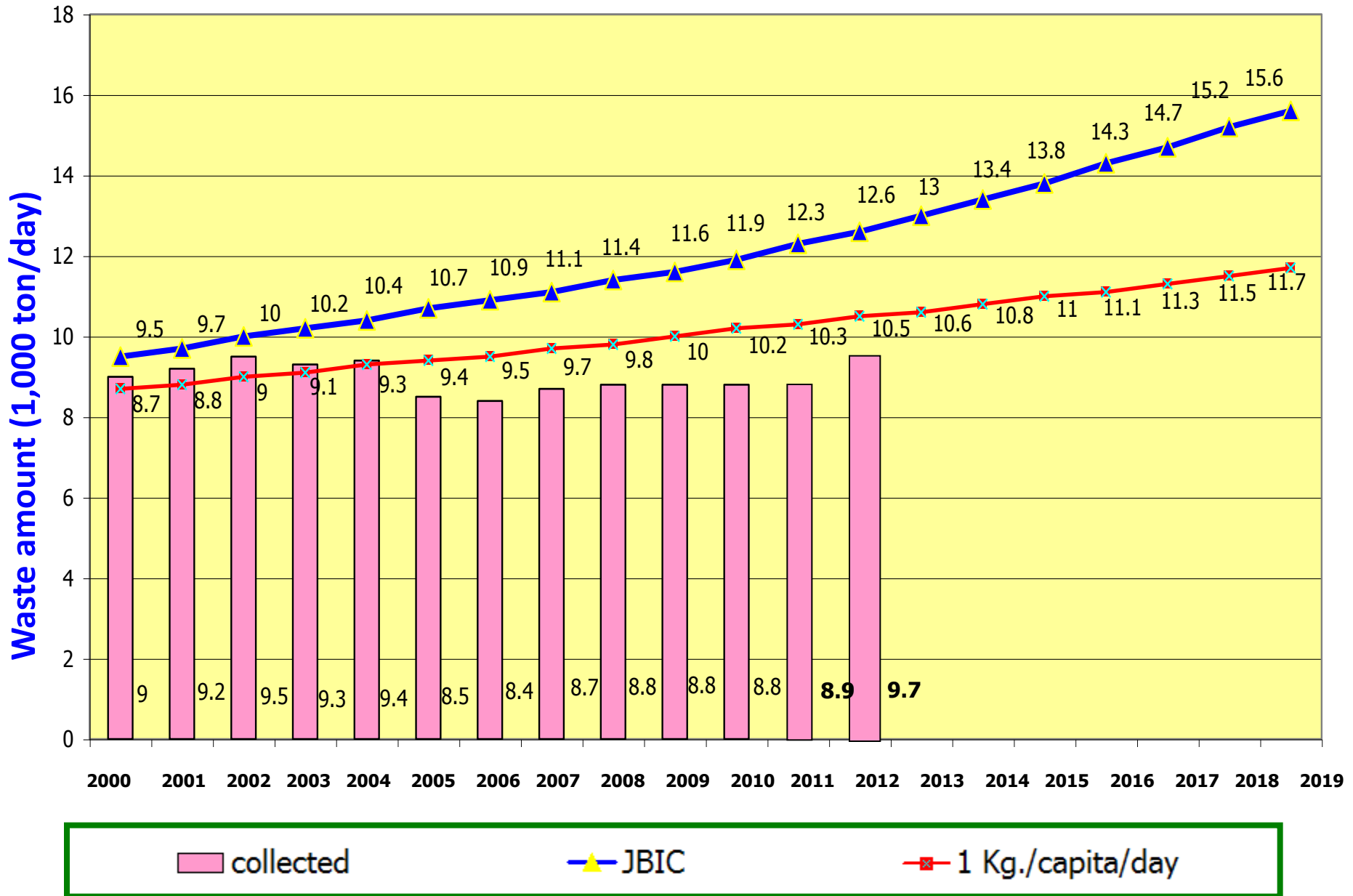
**Department of Environment**

*Waste Collection*

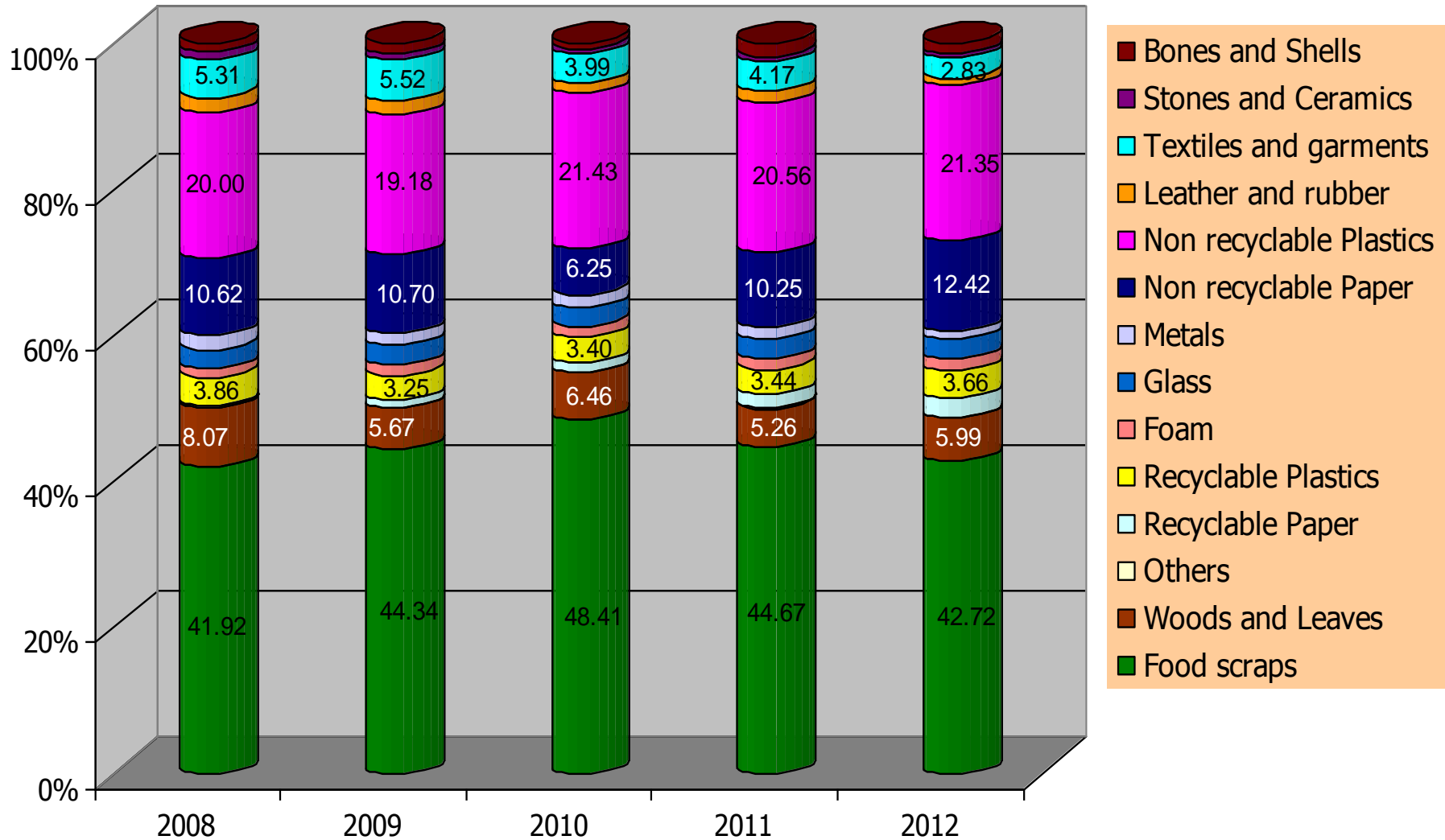
*Treatment and Disposal*



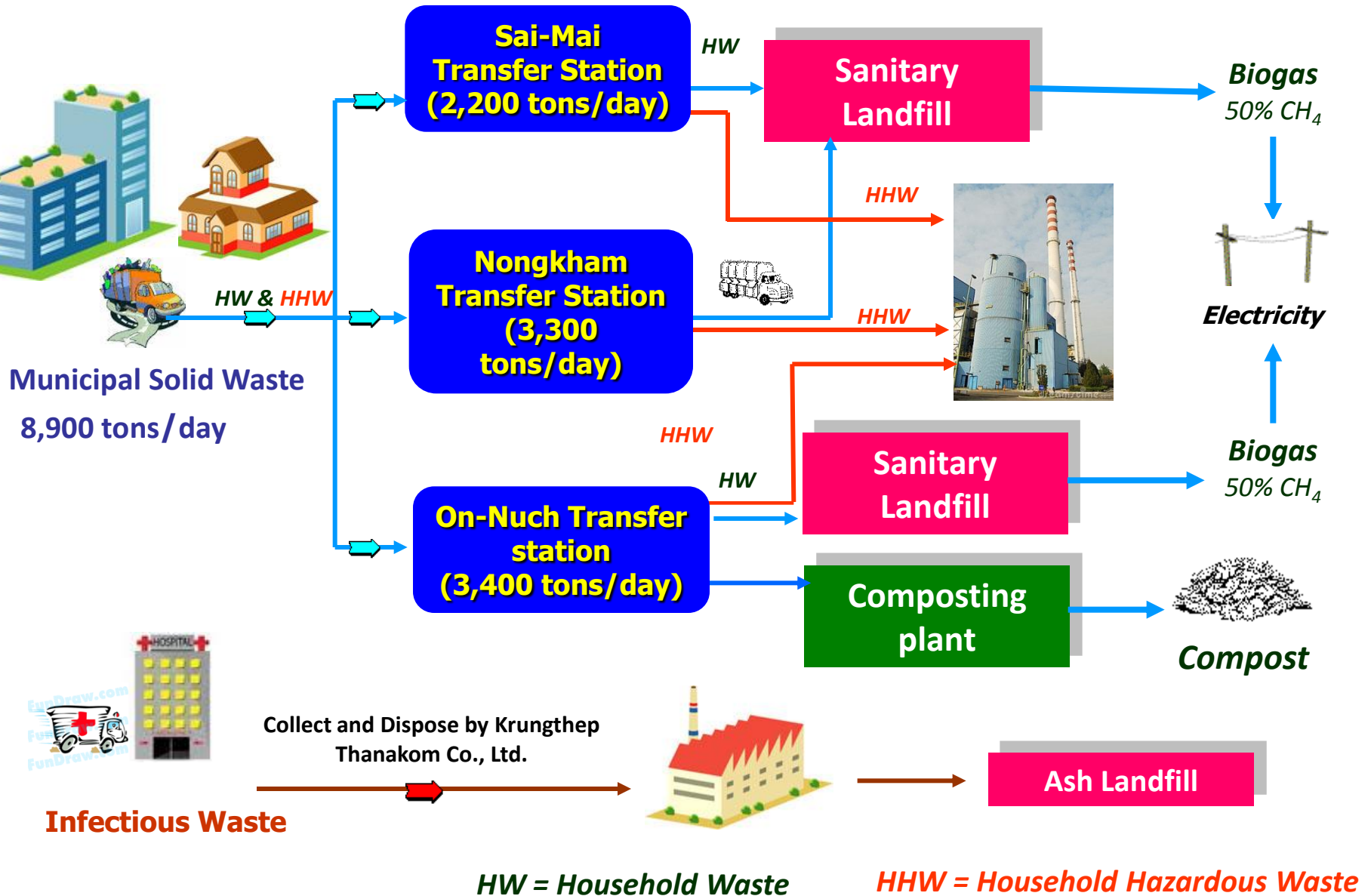
# Trend of MSW Generation in Bangkok



# Trend of Waste Composition



# Wastes Flow in Bangkok



# Location of Transfer Stations

Saimai Transfer Station

2,200 tons/day



Nongkhaem Transfer Station

3,300 tons/day

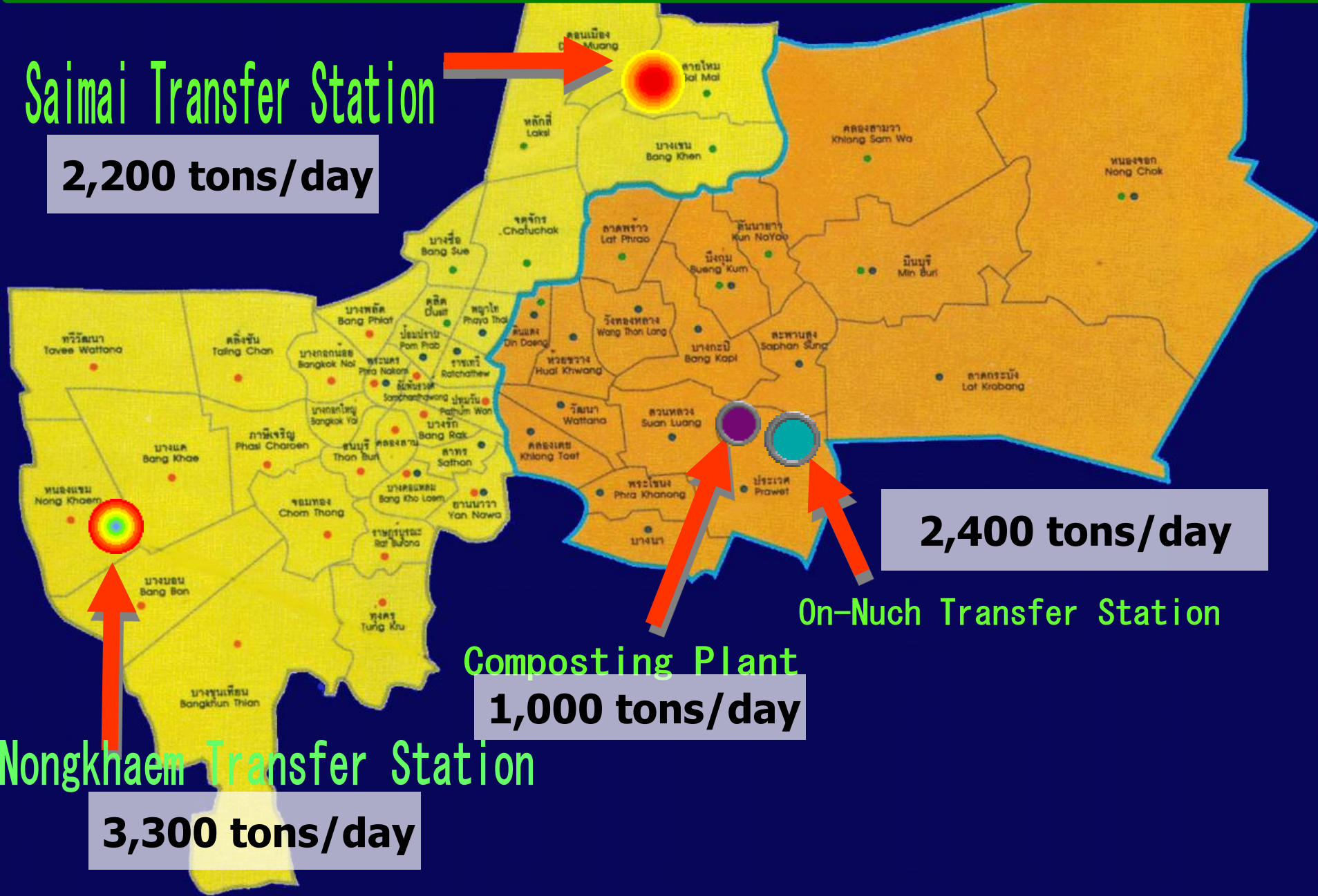
Composting Plant

1,000 tons/day



On-Nuch Transfer Station

2,400 tons/day

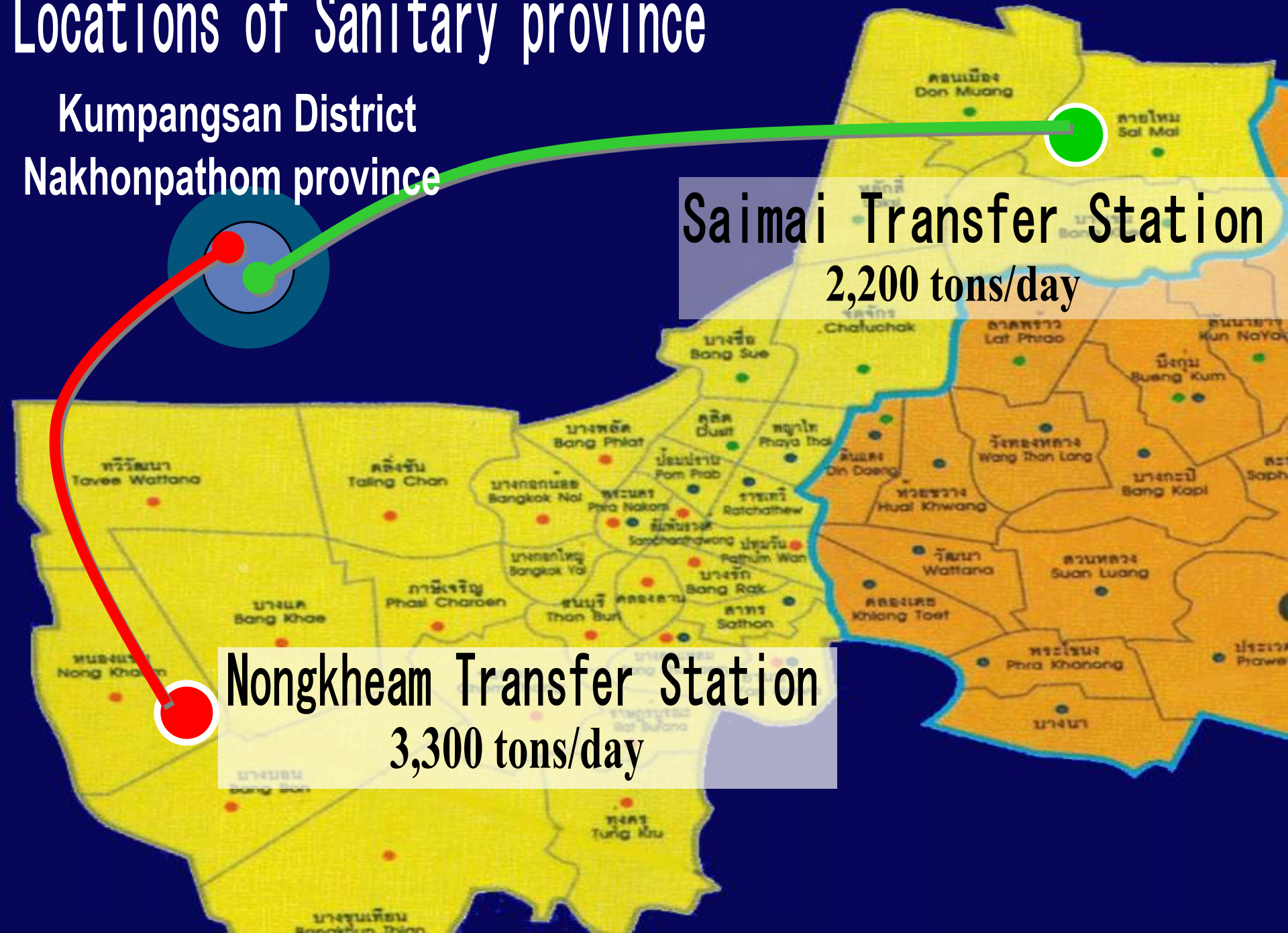


# Locations of Sanitary province

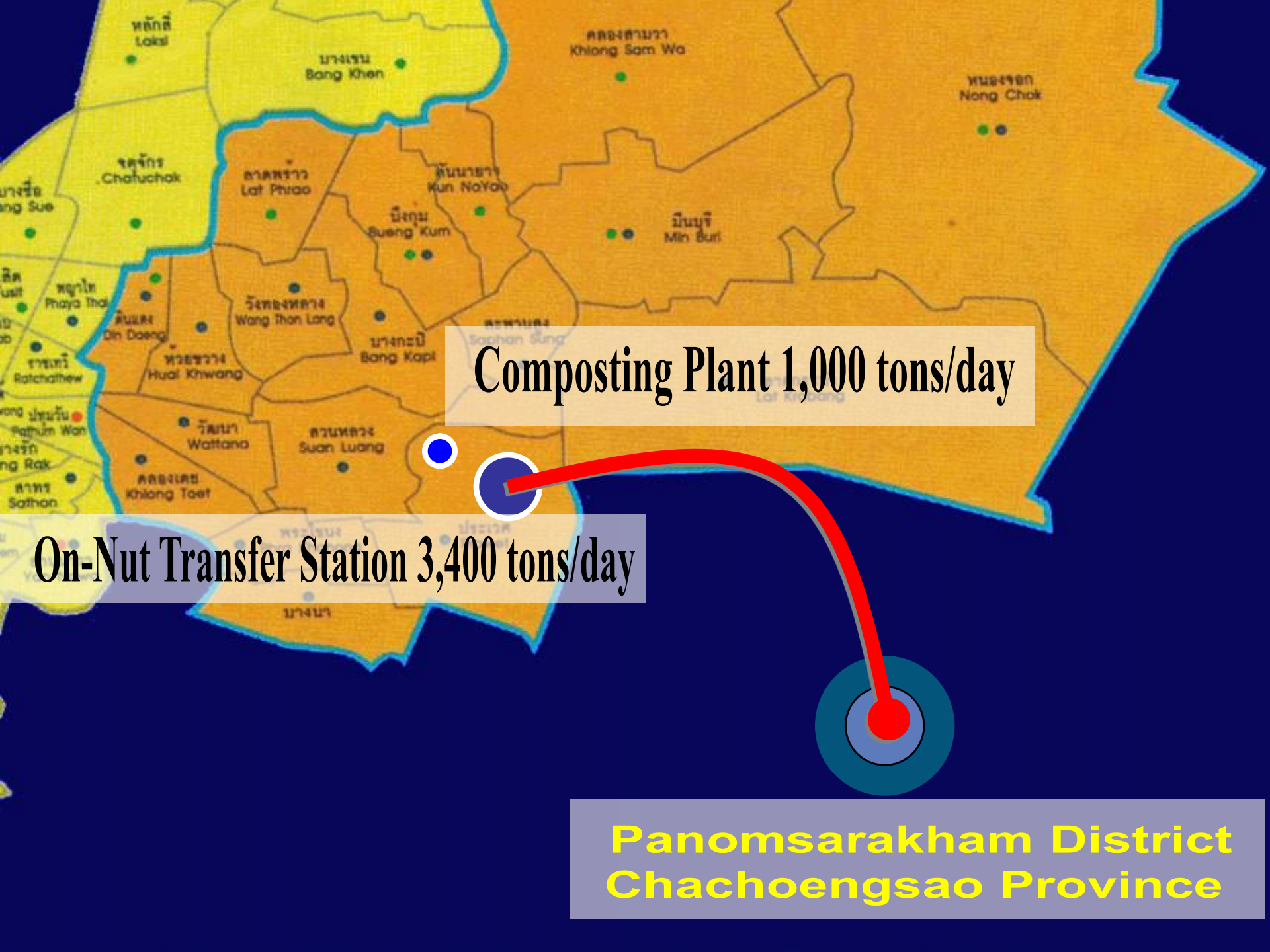
Kumpangsans District  
Nakhonpathom province

Saimai Transfer Station  
2,200 tons/day

Nongkheam Transfer Station  
3,300 tons/day







**Composting Plant 1,000 tons/day**

**On-Nut Transfer Station 3,400 tons/day**

**Panomsarakham District  
Chachoengsao Province**

# SWM Facilities of Bangkok

Name of Facility	Constructed Year	Planned Capacity	Site (Plant) Area	Actual Yearly Operation Amount
1. Composting Plant	1993	1,000 t/d	83,200 m <sup>2</sup> At On-Nuch Disposal Center	1,200 t/d
2. Infectious Incinerator	1996	2x15 t/d	1,600 m <sup>2</sup> At On-Nuch Disposal Center	25 t/d
3. Landfill sites	Belong to private companies			
4. New Municipal Incinerator	2012	300 t/d	At Nongkham Disposal Center	Under Construction
5. New Infectious Incinerator	2012	2x10 t/d	At Nongkham Disposal Center	
6. New Composting Plant	-	600 t/d	At Nongkham Disposal Center	On Process of Bidding
7. Construction Waste	-	500 t/d	At On-Nuch Disposal Center	