



GOVERNMENT OF BANDUNG CITY

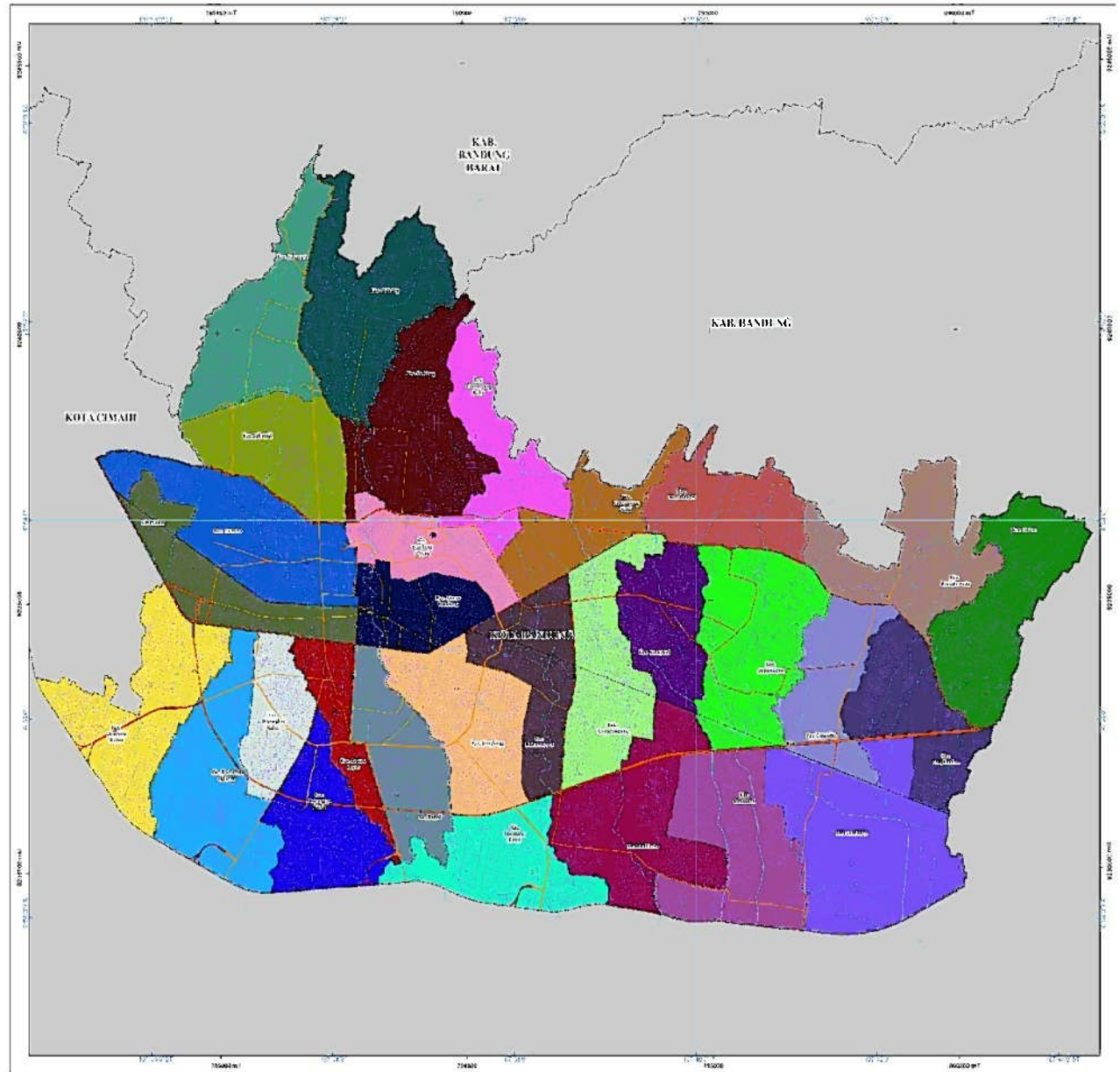
Toward Sustainable Coexistence of City and Industry



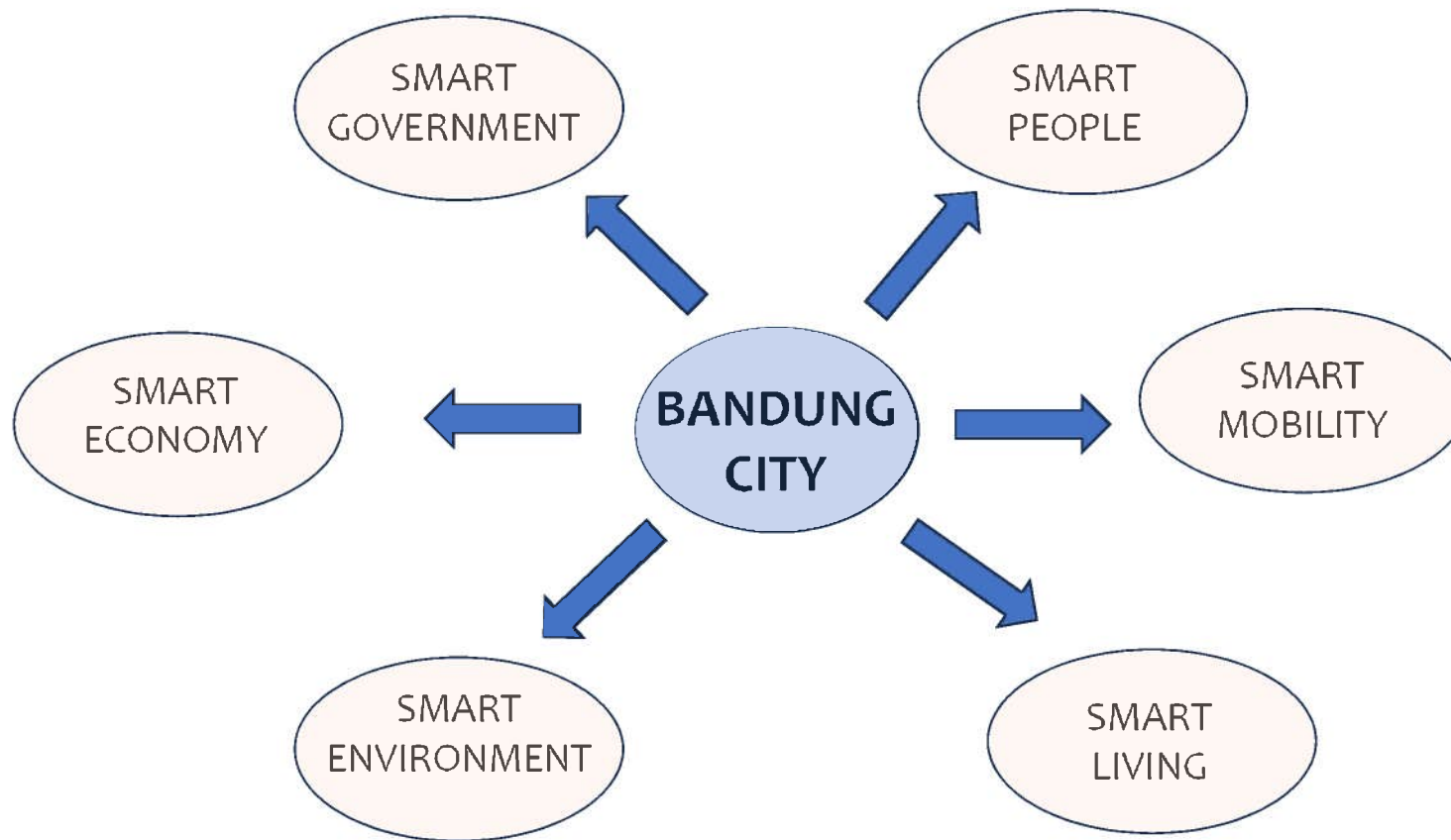
Kawasaki International Eco Business Forum
November 13, 2024
Calutz Kawasaki
(1-1-4 Fujimi, Kawasaki-ku, Kawasaki-shi, Kanagawa)

OVERVIEW OF BANDUNG CITY

- The area of Bandung City is around 16,731 Ha.
- The Bandung City area is divided into 30 sub-districts
- The population in 2023 about 2.57 million



SINCE 2014 THE CITY OF BANDUNG HAS DEVELOPED THE SMART CITY CONCEPT IN ORDER TO REALIZE SUSTAINABLE DEVELOPMENT



SMART ENVIRONMENT



WATER MANAGEMENT



- Citarum River can be used as a raw water source for drinking water
- construction of retention ponds at several points as water parking areas.



WASTE MANAGEMENT

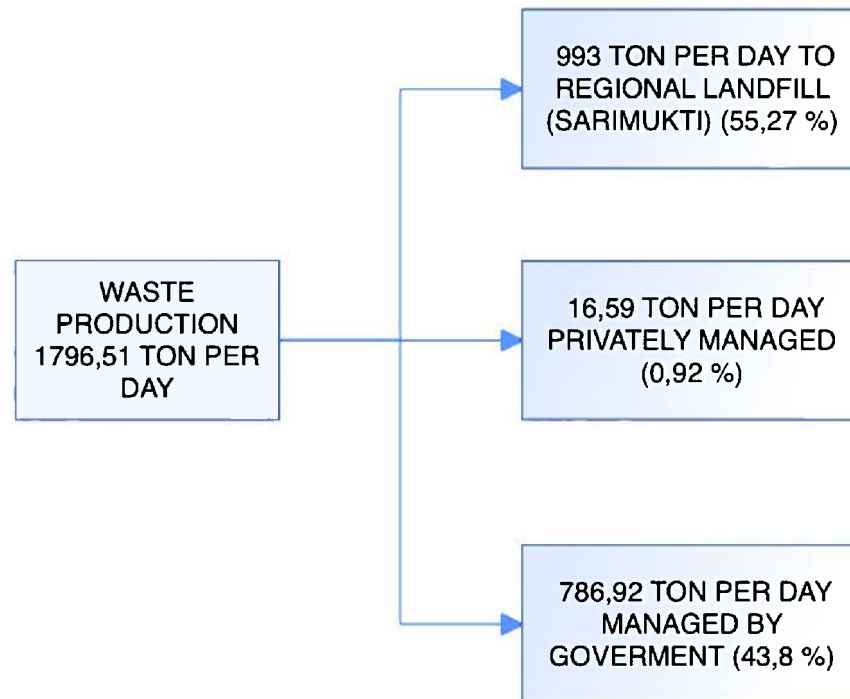


The Bandung City Government is also collaborating with the Octopus application to make it easier for Bandung City residents to recycle waste by involving scavengers and micro businesses.

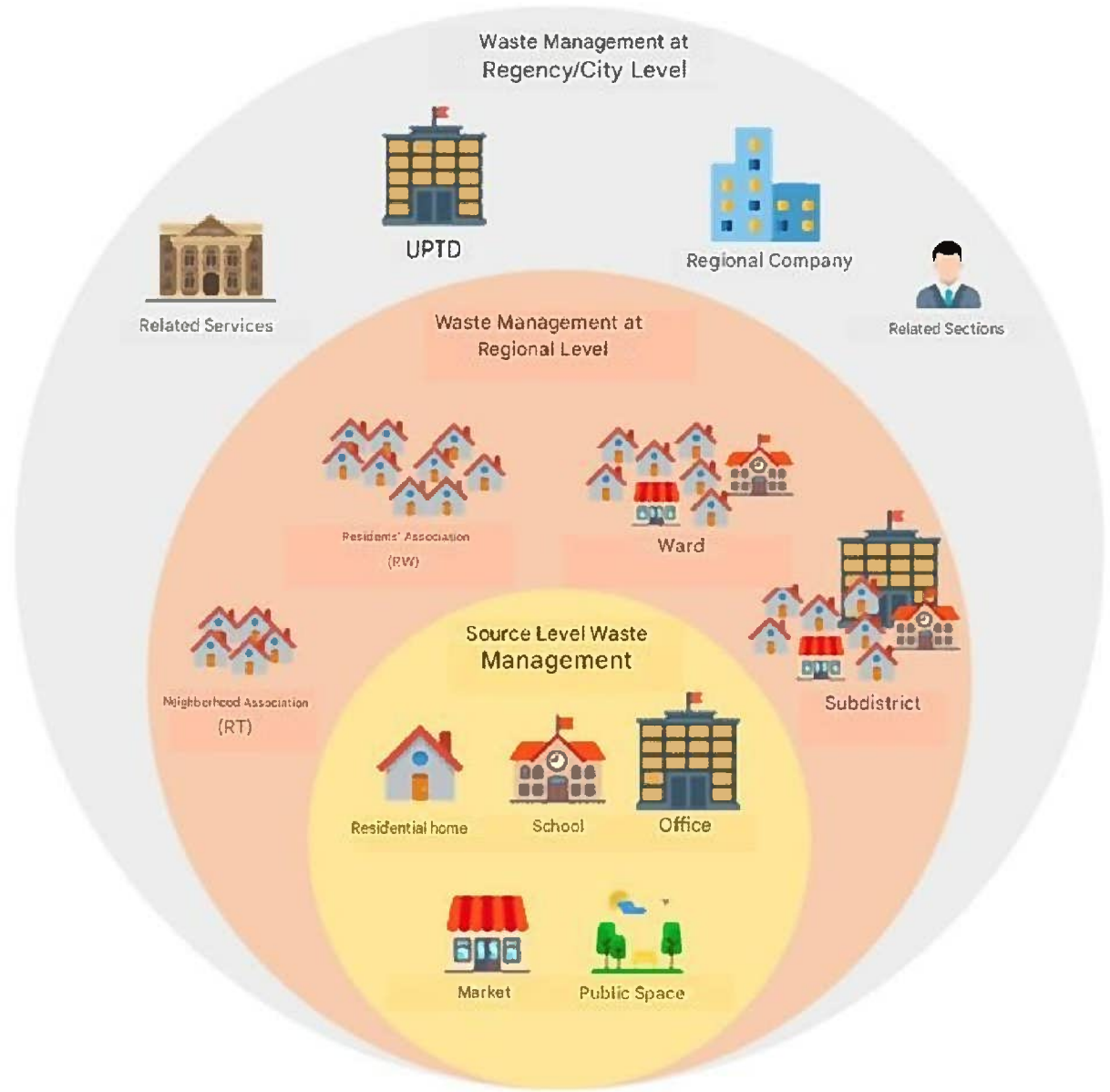
THE ISSU OF SOLID WASTE MANAGEMENT IN BANDUNG

- WASTE MANAGEMENT HAS NOT BEEN INTEGRATED FROM UPPER (SOURCE) TO DOWNSTREAM (LANDFILL)
- COMMUNITY PARTICIPATION IN WASTE MANAGEMENT IS STILL LOW
- WASTE PROCESSING FACILITIES ARE NOT FUNCTIONING OPTIMALLY
- LIMITED LANDFILL SPACE

OVERVIEW OF SOLID WASTE MANAGEMENT IN BANDUNG CITY



LEVEL OF WASTE MANAGEMENT IN THE CITY OF BANDUNG



WASTE MANAGEMENT AT SOURCE LEVEL



- INDIVIDUAL COMPOSTER
- WASIMA
- TAKAKURA

WASTE MANAGEMENT AT REGIONAL LEVEL



- 3R INTERMEDIATE DISPOSAL AREA
- COMMUNAL COMPOSTING
- BRANCH WASTE BANK

WASTE MANAGEMENT AT CITY LEVEL



- INTEGRATED WASTE PROCESSING
- CENTRAL WASTE BANK
- RECYCLING CENTER
- ORGANIC PROCESSING CENTER



← WASTE
MANAGEMENT
AT SOURCE
LEVEL

WASTE
MANAGEMENT
AT REGIONAL
LEVEL (TPS 3R) →



WASTE
MANAGEMENT
AT CITY
LEVEL (TPST)



SOLID WASTE MANAGEMENT BASED ON COMMUNITY PARTICIPATION



WASTE BANK :

- 700 UNIT BRANCH WASTE BANK
- 1 CENTRAL WASTE BANK



INTEGRATED URBAN FARMING

INNOVATION IN THE CENTRAL WASTE BANK OPERATION SYSTEM



INNOVATION CENTRAL WASTE BANK



3. PROGRAM BSI GO (BANK SAMPAH KELILING)

BSI GO!
#Nabung Sampah, Semakny Mudah!

LAPORAN Bazaar Great Bandung
"Tukar sampah jadi sembako"

TOTAL SAMPAH (KG)

9 September	510,8 Kg
17 September	2.347,2 Kg
23 September	730 Kg
24 September	870 Kg

JENIS SAMPAH YANG DISETOR

Plastik Botol	35%
Ember Campur	13%
Dasi/Duplex	47%
Lainnya (Gesa, botol kaca, dll)	5%

Jumlah Besok Sampah Tersebut 4.838 Kg
Nilai tersebut Rp 520 sd Rp 14.000
Produksi sampah dengan Sembako (smpah goreng, beras, dll) dan Pakan layak pakai

#BandungPisahkanSampah
0215-9412-5217
@bni_sadangserang



INTEGRATED URBANFARMING (BURUAN SAE)

- “BURUAN SAE” is a community empowerment program through an integrated urban farming movement promoted by the Bandung City Food Security and Agriculture Service
- THIS PROGRAM is aimed at overcoming food inequality and dependency problems in the city of Bandung
- “BURUAN SAE” is an integrated agricultural program that utilizes yard land or other unproductive land
- Currently, “BURUAN SAE” has inspired and is known by cities around the world, especially those that are members of the Milan Urban Food Policy Pact (MUFPP), which is a network of world cities that care about the importance of food, sustainable food.



TERIMA KASIH

Arigatou gozaimasu
(ありがとうございます)