



The Changing Role of the Development Consultant in the Era of Living With the Coronavirus

Thursday, January 21, 2021

Yachiyo Engineering Co., Ltd.
Specialized Section Director, Water Resources Department,
Overseas Business Division, Business Administration Headquarters
Hajime WATANABE

What is a Development Consultant?

We are a partner that implements various surveys and specific projects to attain aid plans from a neutral standpoint, with a background of advanced expertise and experience for developing country assistance and international cooperation as conducted by the JICA (Japan International Cooperation Agency), the World Bank, and the Asian Development Bank, and others.

We cover the work of consultants and all areas of human life, so that agriculture, water resource development, transport and transportation, disaster prevention, the mining industry, energy, health and medical care, education, the economy, government, society in general, and developing country assistance are involved in all areas of human life and production.

Source: Engineering and Consulting Firms Association, Japan

What Kind of Company is Yachiyo Engineering?

- A consulting company focused on planning, designing and maintaining various social infrastructures
- Many customers are from the Ministry of Land, Infrastructure, Transport and Tourism, and local governments



Changes Caused by the Spread of the Novel Coronavirus

Social issues that have become more evident than before because of the coronavirus

Development issues that originally existed, such as economic disparities, poverty, gender, and access to health and financial services, have become clearly visualized.

In the Field of International Cooperation:

It is substantially impossible for Japanese specialists to travel



Remote project implementation using web conferencing and local partners

- Some progress can be made on projects where relationships are already well established and local resources are abundant.
- The building of new relationships and the composition of cases are difficult to implement remotely, and are somewhat stagnant. (In the case of JICA projects, surveys to understand the current situation are at the heart of the work.)

Business Environment Changes

Difficulty traveling abroad = No rise in sales



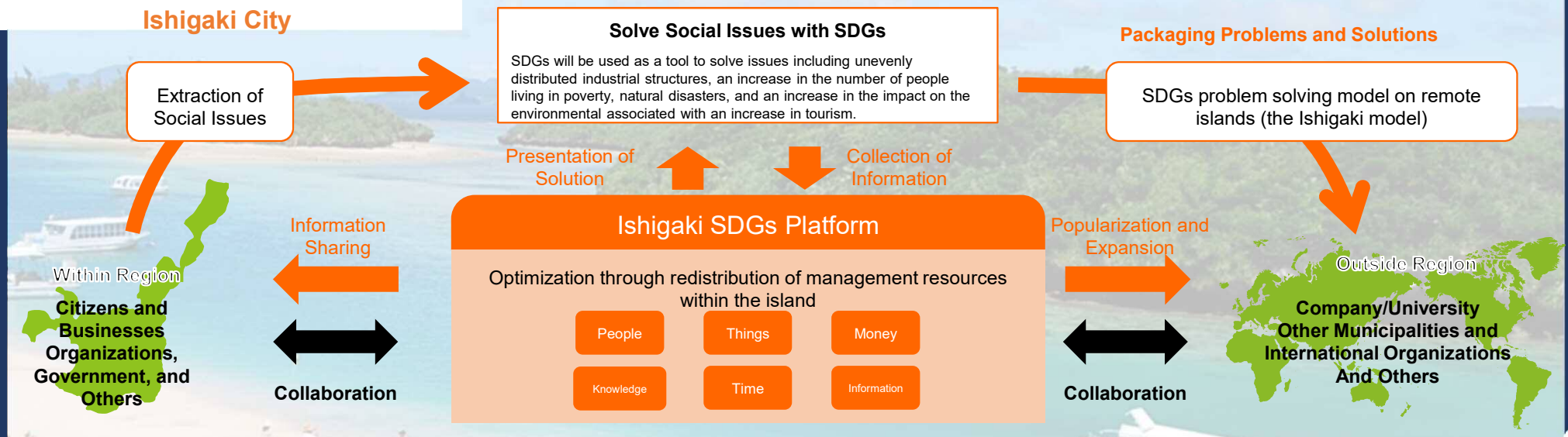
Accelerated communication and search for solutions

- Recognition of the importance of local partners and internal foreign human resources
- Utilization of overseas approaches and survey methods for domestic businesses
- Approach to challenges faced by private companies at overseas sites (production bases, and the like)

[Example] Promotion of SDGs in Domestic Municipalities

- SDGs promotion involves civil society in a series of streams that provide a variety of services, and transforms it in entirety.
- Compared to the environment and economy, existing initiatives have a weak approach to society.
- Understanding the social situation and incorporating that into planning, and the like are often practiced by development consultants through international cooperation projects.

Framework of the SDGs Promotion in Ishigaki City



[Example] Inclusive Overseas Deployment Support to Enhance Corporate Sustainability

- In overseas deployment of private companies, it is difficult to enrich feasibility studies of non-financial aspects (especially social and governance) compared to international cooperation projects implemented by international organizations.
- Conversely, local society and businesses are sustainable together and must mutually enhance each other.
- The know-how to build an environment in which better corporate activities can be practiced is often accumulated in the field of international cooperation.

Consulting to date for the client

Propose solutions that companies can implement within the framework of the current situation of the local society and local government policies and measures and others.



Future consulting methods of with the client

Understand the challenges in the background of the current situation of the local society and the policies of the local government, and clarify the direction that should be taken to achieve a better local society with various related parties. Also propose implementable and feasible solutions to include civil society, as a company.



YACHIYO
Engineering