



Waste management in the 21st century: a planetary emergency

Kawasaki City Eco-Business Forum

31 January 2013

by

Matthew GUBB, Director

International Environmental Technology Centre (IETC)

Division of Technology, Industry and Economics (DTIE)

United Nations Environment Programme (UNEP)

Volumes of municipal solid waste



TABLE 4
Waste Generation
Projections for
2025 by Region

Region	Current Available Data			Projections for 2025			
	Total Urban Population (millions)	Urban Waste Generation		Projected Population		Projected Urban Waste	
		Per Capita (kg/capita/day)	Total (tons/day)	Total Population (millions)	Urban Population (millions)	Per Capita (kg/capita/day)	Total (tons/day)
AFR	260	0.65	169,119	1,152	518	0.85	441,840
EAP	777	0.95	738,958	2,124	1,229	1.5	1,865,379
ECA	227	1.1	254,389	339	239	1.5	354,810
LCR	399	1.1	437,545	681	466	1.6	728,392
MENA	162	1.1	173,545	379	257	1.43	369,320
OECD	729	2.2	1,566,286	1,031	842	2.1	1,742,417
SAR	426	0.45	192,410	1,938	734	0.77	567,545
Total	2,980	1.2	3,532,252	7,644	4,285	1.4	6,069,703

New waste streams: electronic waste and health care waste



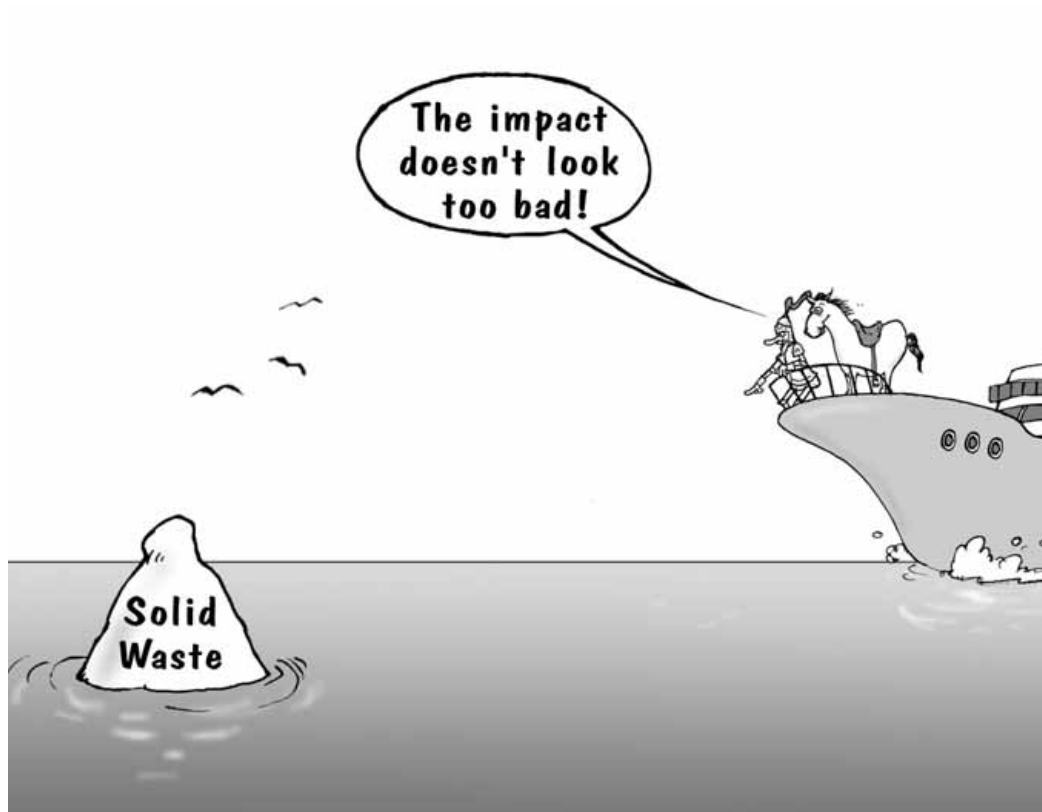
Source: World Bank

3.5 billion people without access to waste management services



Source: World Bank

The impact of improper waste management, part I



The impact of improper waste management, part II



Informal waste workers



Source: World Bank



Loss of food



中文 | Español | Français | Português



RT @giseleofficial: RT @PNUMABrasil 1/3 da comida produzida no mundo é desperdiçada. Prejuízo equivalente a US\$1 trilhão #thinkeatsave http://t.co/NPGSYk7m by asr_giseleb 4 minutes ago

"It is great news that WRAP is working with the UN Environment Programme to develop a plan to reduce global food waste. Each year around 400,000 tonnes of food and drink are wasted by household in Wales alone. On a global scale, the staggering amount of food we waste is wholly unacceptable and a huge drain on our precious resources. That is why tackling the problem of food waste is a top priority for the Welsh Government and every local council in Wales runs a weekly food waste collection service that covers nine out of ten households."
 Wales's Environment and Sustainable Development Minister, John Griffiths

Partners
 Learn more about all the people involved in the campaign



© 2013 THINK.EAT.SAVE

<http://www.thinkeatsave.org/>



Challenges and opportunities



Challenges

Composition of the waste

Growing amounts of waste

Health and environmental hazards

Opportunities

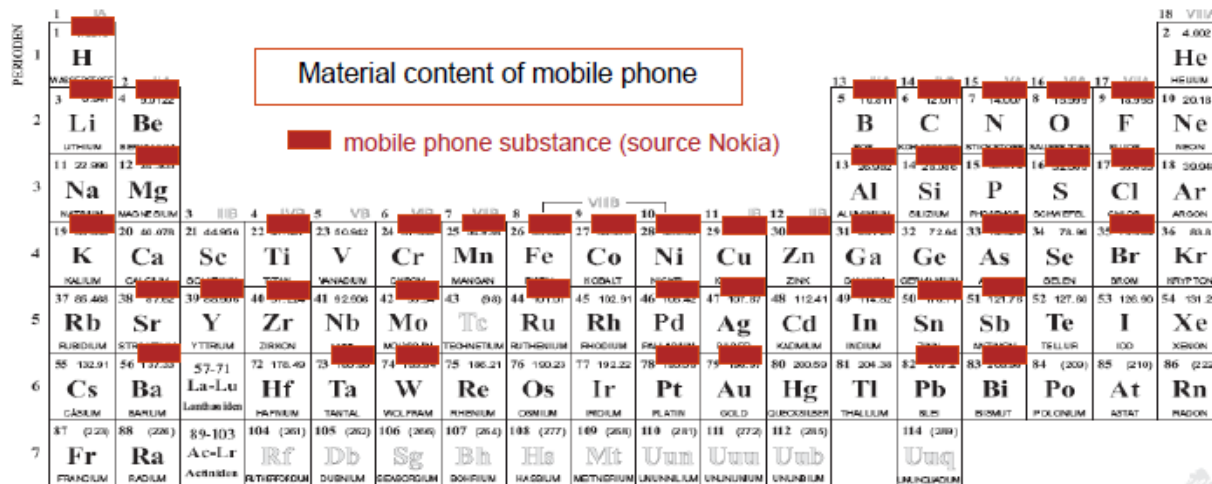
Recycling of materials and recovery of energy

Employment opportunities

Climate change mitigation

Recovery of materials

Waste as a resource



Waste as model sector for the Green Economy

GREEN *economy*



A green economy is one that results in improved human well-being and social equity, while significantly reducing environmental risks and ecological scarcities.

www.unep.org/greeneconomy/







United Nations Environmental Technology Centre International Environmental Technology Centre

2-110 Ryokuchi Koen,
Tsurumi-ku,
Osaka 538-0036, Japan
Tel : +81 (0) 6 6915 4581
Fax : +81 (0) 6 6915 0304
E-mail : ietc@unep.org
Web: www.unep.org/ietc
GPWM: www.unep.org/gpwm



Thank You