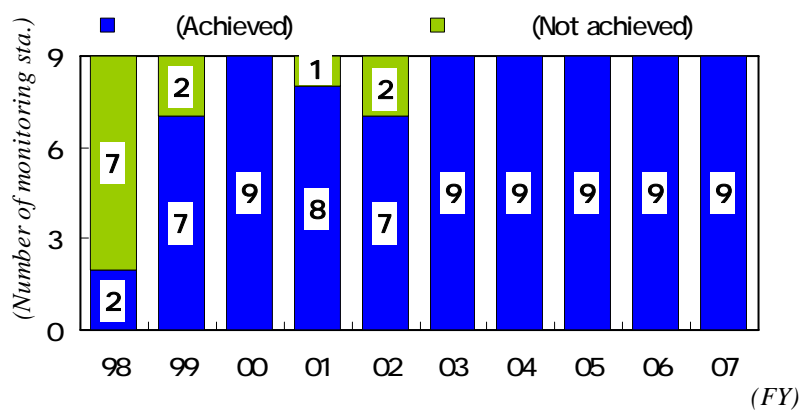


*(Monitoring Results for Environmental Air Quality)*

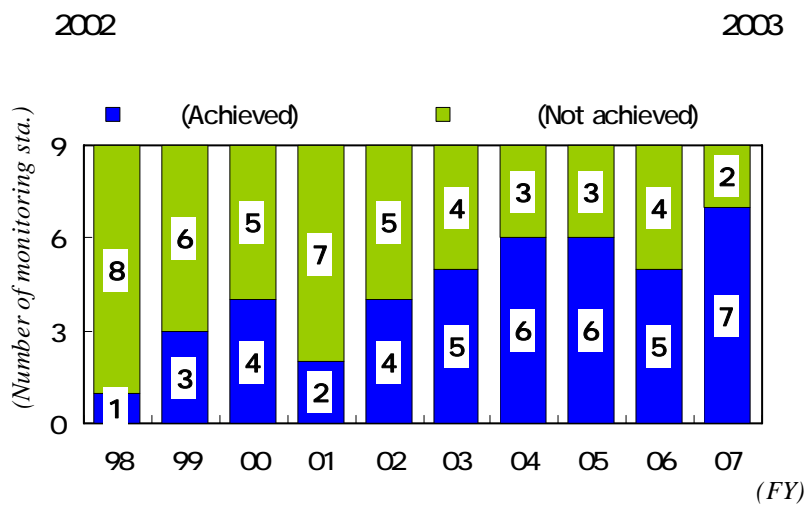
*NO<sub>2</sub> Nitrogen Dioxide*

*(Situation of achievement for Environmental Quality Standards ;  
Hereafter "EQS" means Environmental Quality Standards)*

( )



*(Situation of achievement for EQS of NO<sub>2</sub> :General sta.)*



*(Situation of achievement for EQS of NO<sub>2</sub> :Roadside sta.)*

**NO<sub>2</sub>**  
(Measurement Result and assessment for NO<sub>2</sub>)

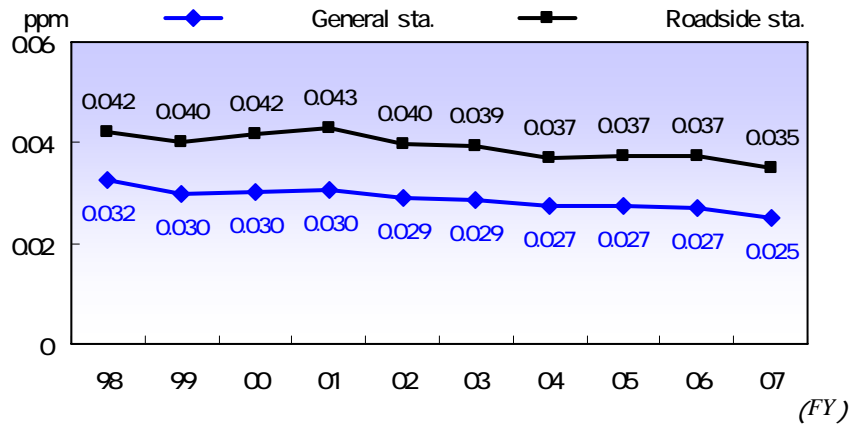
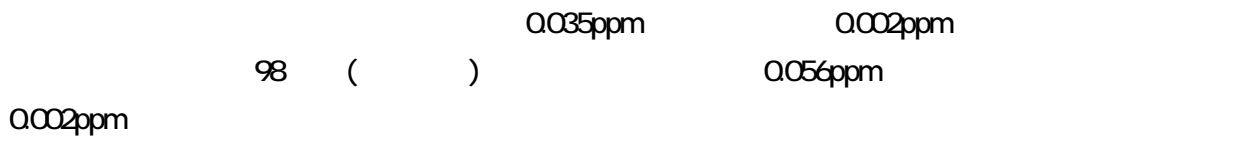
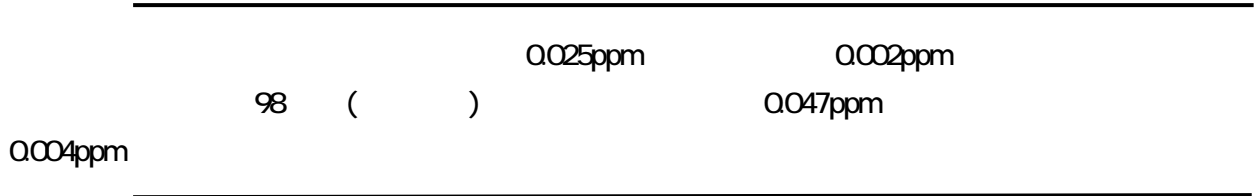
(Monitoring station)		(Assessment of EQS)		(Valid monitoring day)	(Days that adapted to EQS , and its rate)			(Days that did not adapted to EQS , and its rate)			3 (Days that did not adapted to environmental target value , and its rate)		(Annual average)	
		98% ( 1) (98% value of daily average)	2 (Assessment)											×
(General sta.)	(Daishi)	0052		366	364	99.5	2	05	86	23.5	0029			
	(Tajima)	0053		361	358	99.2	3	08	93	25.8	0028			
	(Kawasaki)	0051		365	363	99.5	2	05	93	25.5	0028			
	(Saiwai)	0049		359	359	100	0	0	128	35.7	0026			
	(Nakahara)	0050		361	361	100	0	0	147	40.7	0024			
	(Takatsu)	0047		362	362	100	0	0	145	40.1	0024			
	(Miyamae)	0046		365	365	100	0	0	162	44.4	0023			
	(Tama)	0041		366	366	100	0	0	207	56.6	0020			
	(Asao)	0038		363	363	100	0	0	234	64.5	0019			
(Roadside sta.)	(Ikegami)	0069	×	357	315	88.2	42	11.8	18	5.0	0044			
	(Nissincho)	0050		333	332	99.7	1	03	71	21.3	0030			
	(Shiyakushomae)	0057		360	356	98.9	4	1.1	49	13.6	0035			
	(Endohcho)	0071	×	363	336	92.6	27	7.4	20	5.5	0043			
	(Nakaharaheiwakouen)	0050		363	362	99.7	1	03	94	25.9	0028			
	(Futago)	0060		363	356	98.1	7	1.9	14	3.9	0042			
	(Miyamaedairakimae)	0053		361	360	99.7	1	03	42	11.6	0032			
	(Honmurabashi)	0049		363	363	100	0	0	57	15.7	0030			
	(Kakio)	0043		366	366	100	0	0	63	17.2	0028			

1 98 98 98 98  
 2 98 006ppm 98  
 3 1 002ppm ×

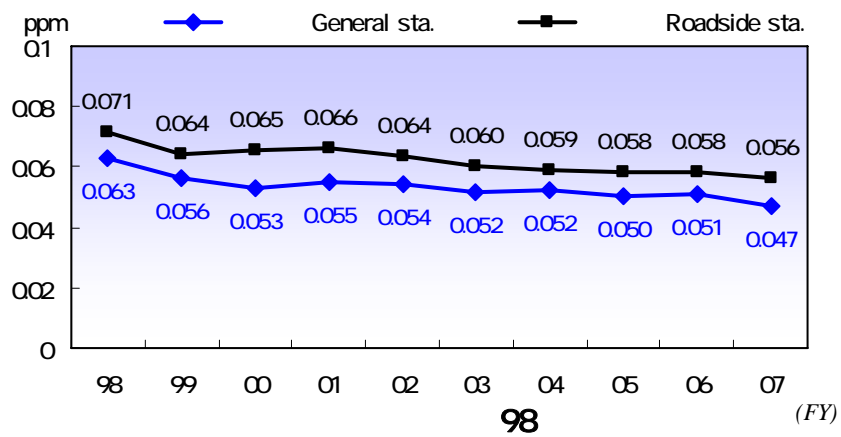
Trend of annual average and 98% value of

daily average

2001



(Trend of annual average for NO<sub>2</sub>)

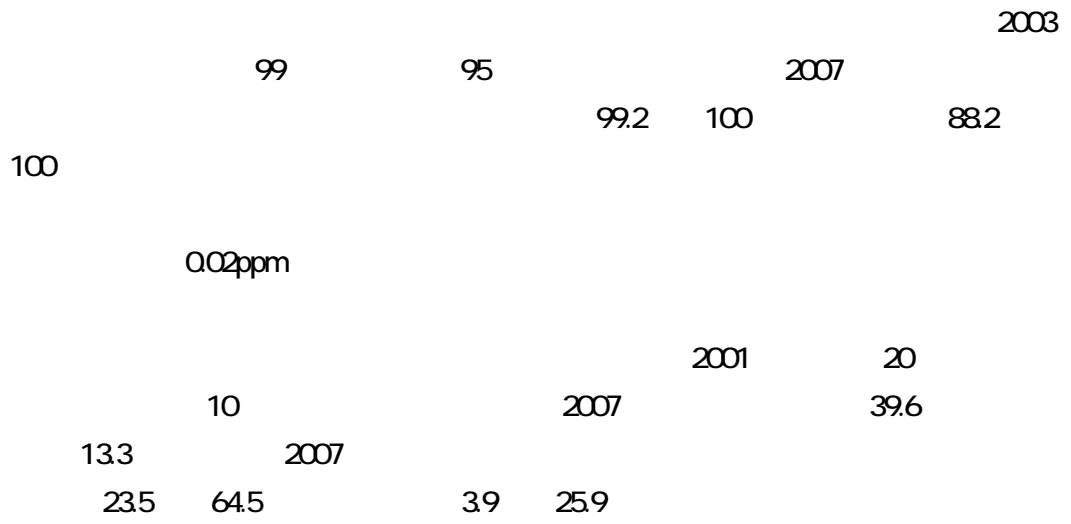


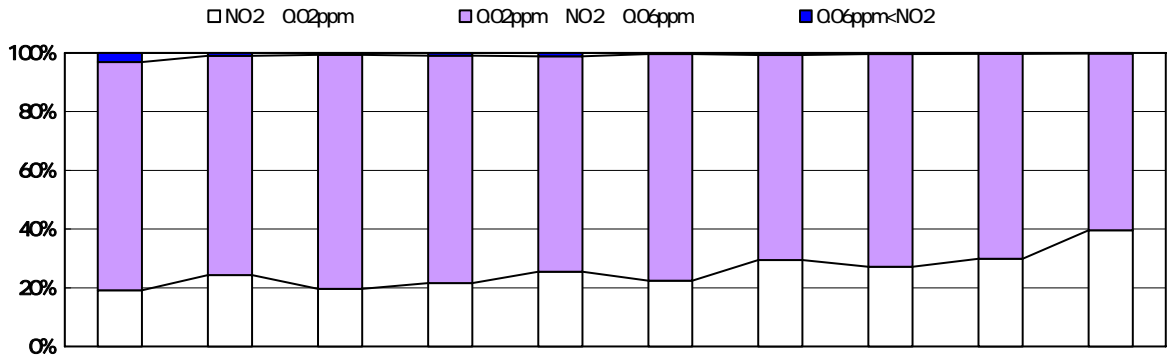
(Trend of 98% value of daily average for NO<sub>2</sub>)

*Days that adapted to EQS and*

*environmental target value , and its rate*

(0.06ppm )



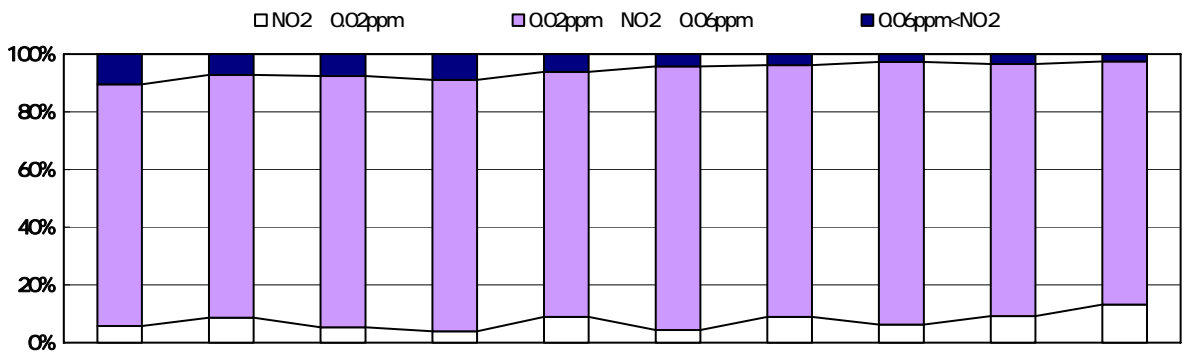


(FY)		98	99	00	01	02	03	04	05	06	07
0.06ppm<NO <sub>2</sub>	(days)	102	34	22	29	40	14	26	13	12	7
		3.1	1.0	0.7	0.9	1.2	0.4	0.8	0.4	0.4	0.2
NO <sub>2</sub> 0.06ppm	(days)	3167	3248	3249	3227	3231	3192	3241	3165	3263	3261
		96.9	99.0	99.3	99.1	98.8	99.6	99.2	99.6	99.6	99.8
0.02ppm NO <sub>2</sub> 0.06ppm	(days)	2541	2451	2606	2525	2397	2467	2279	2300	2286	1966
		77.8	74.7	79.6	77.5	73.3	77.0	69.8	72.4	69.8	60.2
NO <sub>2</sub> 0.02ppm	(days)	626	797	643	702	834	725	962	865	977	1295
		19.1	24.3	19.7	21.6	25.5	22.6	29.4	27.2	29.8	39.6

) ( ) 9 ( )

### NO<sub>2</sub>

(Trend of concentration distribution of daily average for NO<sub>2</sub>: General sta.)

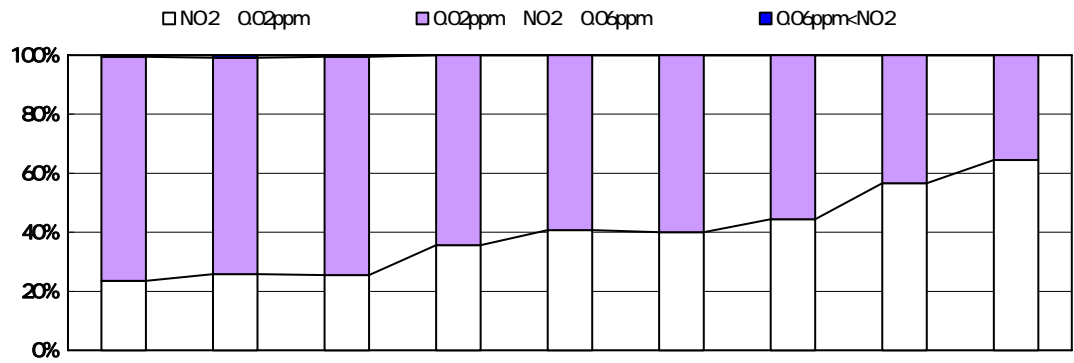


(FY)		98	99	00	01	02	03	04	05	06	07
0.06ppm<NO <sub>2</sub>	(days)	342	237	250	290	200	138	122	89	112	83
		10.5	7.2	7.7	9.0	6.2	4.3	3.8	2.8	3.4	2.6
NO <sub>2</sub> 0.06ppm	(days)	2923	3037	3014	2943	3030	3080	3062	3121	3144	3146
		89.5	92.8	92.3	91.0	93.8	95.7	96.2	97.2	96.6	97.4
0.02ppm NO <sub>2</sub> 0.06ppm	(days)	2734	2754	2841	2814	2742	2938	2777	2920	2845	2718
		83.7	84.2	87.0	87.0	84.9	91.3	87.2	90.9	87.4	84.2
NO <sub>2</sub> 0.02ppm	(days)	189	283	173	129	288	142	285	201	299	428
		5.8	8.6	5.3	4.0	8.9	4.4	9.0	6.3	9.2	13.3

) ( ) 9 ( )

### NO<sub>2</sub>

(Trend of concentration distribution of daily average for NO<sub>2</sub>: Roadside sta.)

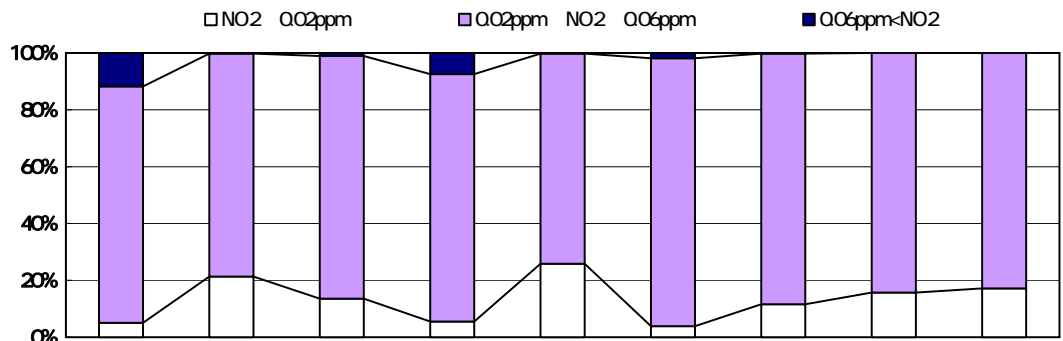


(Monitoring sta.)		(Daishi)	(Tajima)	(Kawasaki)	(Saiwai)	(Nakahara)	(Takatsu)	(Miyamae)	(Tama)	(Asao)
0.06ppm<NO <sub>2</sub>	(days)	2	3	2	0	0	0	0	0	0
		0.5	0.8	0.5	0	0	0	0	0	0
NO <sub>2</sub> 0.06ppm	(days)	364	358	363	359	361	362	365	366	363
		99.5	99.2	99.5	100	100	100	100	100	100
0.02ppm NO <sub>2</sub> 0.06ppm	(days)	278	265	270	231	214	217	203	159	129
		76.0	73.4	74.0	64.3	59.3	59.9	55.6	43.4	35.5
NO <sub>2</sub> 0.02ppm	(days)	86	93	93	128	147	145	162	207	234
		23.5	25.8	25.5	35.7	40.7	40.1	44.4	56.6	64.5

### NO<sub>2</sub> 2007

(Concentration distribution of daily average for NO<sub>2</sub> : General sta. FY 2007)

< >



(Monitoring sta.)		(Ikegami)	(Nissincho)	(Shiyakusho-mae)	(Endohcho)	(Nakahara-heiwakouen)	(Futago)	(Miyamae-dairakimae)	(Honmura-bashi)	(Kakio)
0.06ppm<NO <sub>2</sub>	(days)	42	1	4	27	1	7	1	0	0
		11.8	0.3	1.1	7.4	0.3	1.9	0.3	0	0
NO <sub>2</sub> 0.06ppm	(days)	315	332	356	336	362	356	360	363	366
		88.2	99.7	98.9	92.6	99.7	98.1	99.7	100	100
0.02ppm NO <sub>2</sub> 0.06ppm	(days)	297	261	307	316	268	342	318	306	303
		83.2	78.4	85.3	87.1	73.8	94.2	88.1	84.3	82.8
NO <sub>2</sub> 0.02ppm	(days)	18	71	49	20	94	14	42	57	63
		5.0	21.3	13.6	5.5	25.9	3.9	11.6	15.7	17.2

### NO<sub>2</sub> 2007

(Concentration distribution of daily average for NO<sub>2</sub> : Roadside sta. FY 2007)

(Trend of annual average for NO<sub>2</sub>)

		ppm																																			
(FY)		74	75	76	77	78	79	80	81	82	83	84	85	86	87	88	89	90	91	92	93	94	95	96	97	98	99	00	01	02	03	04	05	06	07		
General sta.	Daishi	0029	0028	0028	0026	0027	0025	0025	0024	0024	0033	0037	0033	0035	0036	0035	0036	0038	0041	0038	0035	0036	0034	0035	0036	0036	0033	0033	0034	0033	0032	0031	0032	0031	0029		
	Taiima	0037	0033	0037	0035	0036	0036	0033	0033	0028	0032	0032	0033	0033	0036	0035	0036	0037	0038	0036	0034	0035	0033	0034	0036	0036	0032	0032	0034	0031	0031	0030	0031	0031	0028		
	Kawasaki	0032	0037	0035	0034	0030	0024	0027	0025	0023	0034	0035	0033	0035	0036	0035	0037	0038	0039	0038	0035	0036	0034	0036	0036	0036	0033	0034	0035	0033	0032	0031	0030	0031	0028		
	Saiwai hokenfukusisenta	0031	0032	0033	0031	0026	0023	0028	0027	0023	0030	0035	0032	0034	0034	0034	0034	0035	0037	0036	0034	0034	0033	0035	0035	0035	0032	0032	0032	0031	0031	0029					
	Saiwai																																	0027	0028	0026	
	Nakahara	0030	0029	0030	0031	0026	0022	0019	0019	0020	0029	0031	0029	0031	0032	0031	0032	0033	0034	0033	0031	0030	0030	0033	0032	0032	0029	0030	0030	0029	0029	0027	0028	0028	0024		
	Takatsu	0030	0030	0030	0032	0035	0029	0027	0031	(0033)	0031	0030	0028	0032	0032	0031	0032	0033	0034	0033	0032	0031	0031	0032	0032	0032	0030	0031	0031	0030	0030	0027	0028	0028	0024		
	Miyamae:saginuma					0028	0025	0024	0021	0024	0032	0033	0027	0029	0030	0030	0030	0031	0033	0032	0031	0030	0030	0032	0032	0032	0029	0029	0030	0028	0027						
	Miyamae																																	0026	0027	0026	0023
	Tama:hokenjyo	0026	0021	0028	0026	0026	0025	0026	0027	0024	0032	0034	0026	0028	0030	0030	0029	0030	0033	0030																	
	Tama																					0026	0027	0026	0028	0028	0028	0026	0026	0026	0025	0025	0023	0023	0024	0020	
	Asao						0026	0025	0025	0023	0024	0024	0023	0024	0024	0025	0025	0025	0027	0025	0025	0024	0024	0026	0026	0025	0024	0025	0022	0021	0022	0021	0021	0020	0019		
	(General sta. average)	0031	0030	0032	0031	00293	0026	0026	0026	0024	0031	0032	0029	0031	0032	0032	0032	0033	0035	0033	0031	0031	0031	0032	0033	0032	0030	0030	0030	0029	0029	0027	0027	0027	0025		
Roadside sta.	Ikegami								0048	0046	0047	0046	0049	0051	0054	0056	0056	0056	0056	0051	0050	0049	0051	0051	0051	0051	0049	0048	0044	0044	0043	0044	0045	0044			
	Shinkawadori						0042	0038	0039	0045	0042	0043	0044	0049	0046	0045	0046	0049	0047	0045	0045	0044	0046	0046	0046	0044	0044	0045	0041								
	Nissincho																													0034	0033	0032	0031	0030			
	Shivakushomae										0035	0035	0037	0039	0041	0041	0040	0042	0044	0044	0040	0041	0039	0043	0043	0043	0040	0043	0044	0042	0043	0035	0034	0038	0035		
	Endocho						0044	0036	0036	0040	0035	0037	0037	0037	0042	0043	0042	0044	0043	0041	0040	0039	0041	0041	0040	0039	0051	0050	0047	0048	0045	0046	0046	0043			
	Kiduki						0035	0032	0032	0034	0037	0034	0038	0038	0037	0036	0036	0038																			
	Nakaharaheiwakouen																					0037	0036	0037	0038	0039	0038	0034	0035	0036	0033	0033	0031	0032	0031	0028	
	Takatsuyuijiro						0043	0043	0036	0041	0036																										
	Futago													0045	0043	0044	0043	0044	0047	0046	0045	0043	0044	0046	0045	0047	0047	0046	0049	0047	0046	0044	0044	0045	0042		
	Maginu						0036	0033	0030	0036	0039	0038	0039	0040	0038	0038	0036	0040	0038	0038	0036	0036	0036	0037	0037	0038	0035	0035									
	Miyamaedairaekimae																																				
	Tamakuyakushomae					0039	0027	0034	0026	0032	0042	0039	0037	0038	0041	0039	0038	0039	0039											0042	0039	0038	0037	0036	0035	0032	
	Honmurabashi																																				
	Kakio							0024	0022	0025	0024	0025	0026	0027	0025	0025	0027	0034	0035	0034	0034	0036	0036	0036	0038	0036	0034	0035	0033	0031	0031	0032	0031	0030	0028		
	Roadside sta. average					0039	0032	0039	0035	0035	0039	0037	0038	0040	0041	0041	0040	0041	0043	0044	0041	0040	0040	0042	0042	0042	0040	0042	0043	0040	0039	0037	0037	0037	0035		

1978

1983

4

60 12

1991

2000

2000



98 (Trend of 98% value of daily average for NO<sub>2</sub>)

		ppm																														
(FY)		78	79	80	81	82	83	84	85	86	87	88	89	90	91	92	93	94	95	96	97	98	99	00	01	02	03	04	05	06	07	
General sta.	Daishi	0050	0048	0048	0045	0049	0057	0068	0059	0065	0075	0064	0066	0080	0074	0070	0063	0067	0061	0063	0067	0069	0060	0059	0060	0060	0057	0059	0057	0057	0052	
	Tajima	0077	0068	0063	0063	0052	0060	0068	0065	0065	0076	0067	0074	0071	0074	0067	0066	0067	0061	0062	0068	0070	0059	0058	0060	0061	0058	0058	0057	0058	0053	
	Kawasaki	0054	0042	0059	0044	0050	0058	0066	0060	0063	0074	0065	0073	0076	0074	0067	0065	0071	0062	0062	0066	0068	0061	0057	0061	0062	0058	0058	0052	0055	0051	
	Saiwai hokenfukusisentā	0044	0040	0053	0048	0041	0055	0072	0058	0063	0070	0068	0063	0079	0070	0065	0067	0065	0059	0063	0065	0067	0061	0056	0058	0058	0056					
	Saiwai																												0051	0054	0049	
	Nakahara	0054	0037	0035	0033	0046	0053	0066	0052	0059	0072	0060	0066	0074	0066	0062	0063	0061	0056	0062	0062	0064	0058	0053	0057	0056	0051	0052	0054	0055	0060	
	Takatsu	0076	0060	0054	0051	(0060)	0051	0058	0051	0058	0066	0060	0065	0071	0062	0060	0061	0060	0055	0058	0062	0061	0057	0053	0055	0053	0052	0051	0051	0050	0047	
	Miyamae:saginuma	0051	0047	0041	0039	0049	0053	0066	0049	0053	0064	0060	0063	0063	0060	0059	0060	0057	0054	0054	0060	0061	0054	0051	0053	0050	0048					
	Miyamae																											0048	0049	0048	0046	
	Tama:hokeniyo	0056	0041	0052	0048	0046	0062	0072	0048	0054	0060	0056	0061	0062	0058	0057																
	Tama																	0049	0052	0049	0053	0056	0055	0050	0047	0050	0047	0047	0045	0043	0045	0041
	Asao		0050	0051	0048	0045	0048	0050	0043	0049	0053	0051	0056	0053	0055	0051	0052	0049	0048	0048	0050	0051	0047	0045	0040	0039	0040	0041	0038	0038	0038	
		(General sta. average)	0058	0048	0051	0047	0047	0055	0065	0054	0059	0068	0061	0065	0070	0066	0062	0061	0061	0056	0058	0062	0063	0056	0053	0055	0054	0052	0052	0050	0051	0047
Roadside sta.	Ikesami				0081	0089	0073	0085	0083	0091	0100	0093	0105	0102	0098	0088	0087	0084	0078	0080	0082	0086	0079	0079	0076	0070	0067	0069	0068	0070	0069	
	Shinkawadori			0080	0073	0065	0070	0079	0069	0071	0087	0074	0079	0082	0086	0072	0073	0074	0068	0070	0072	0075	0065	0067	0066	0064						
	Nissincho																										0054	0057	0056	0053	0050	
	Shiyakushomae					0058	0071	0066	0070	0078	0074	0071	0081	0087	0074	0068	0070	0066	0069	0073	0075	0064	0068	0068	0071	0067	0058	0056	0061	0057		
	Endohcho			0074	0057	0060	0065	0066	0064	0064	0067	0071	0077	0080	0075	0071	0069	0070	0065	0069	0073	0070	0066	0081	0075	0075	0071	0071	0073	0070	0071	
	Kiduki			0063	0057	0059	0065	0070	0061	0065	0075	0073	0069	0074	0069																	
	Nakaharahaikouen																	0070	0068	0064	0070	0071	0074	0062	0060	0063	0059	0057	0056	0057	0053	0050
	Takatsuiyuiro			0072	0072	0059	0065	0068																								
	Futago									0071	0073	0077	0072	0081	0076	0071	0075	0068	0072	0073	0073	0076	0072	0068	0073	0071	0067	0067	0065	0065	0060	
	Maginu		0057	0058	0057	0067	0066	0066	0069	0071	0067	0068	0063	0074	0062	0060	0062	0058	0059	0058	0062	0065	0066	0054								
	Miyamaedairaekimae																									0063	0060	0057	0057	0056	0055	0053
	Tamakuvakushomae	0065	0043	0056	0050	0055	0067	0062	0059	0063	0073	0068	0066	0070	0065																	
	Homurabashi																	0058	0060	0061	0064	0066	0059	0058	0060	0055	0054	0052	0048	0049	0049	
	Kakio				0045	0047	0047	0046	0045	0049	0059	0048	0050	0049	0057	0054	0054	0054	0055	0054	0059	0056	0053	0053	0051	0047	0047	0048	0047	0045	0043	
		Roadside sta. average	0065	0050	0067	0063	0063	0064	0068	0065	0068	0075	0072	0072	0077	0075	0070	0070	0067	0065	0067	0070	0071	0064	0065	0066	0064	0060	0060	0058	0058	0056

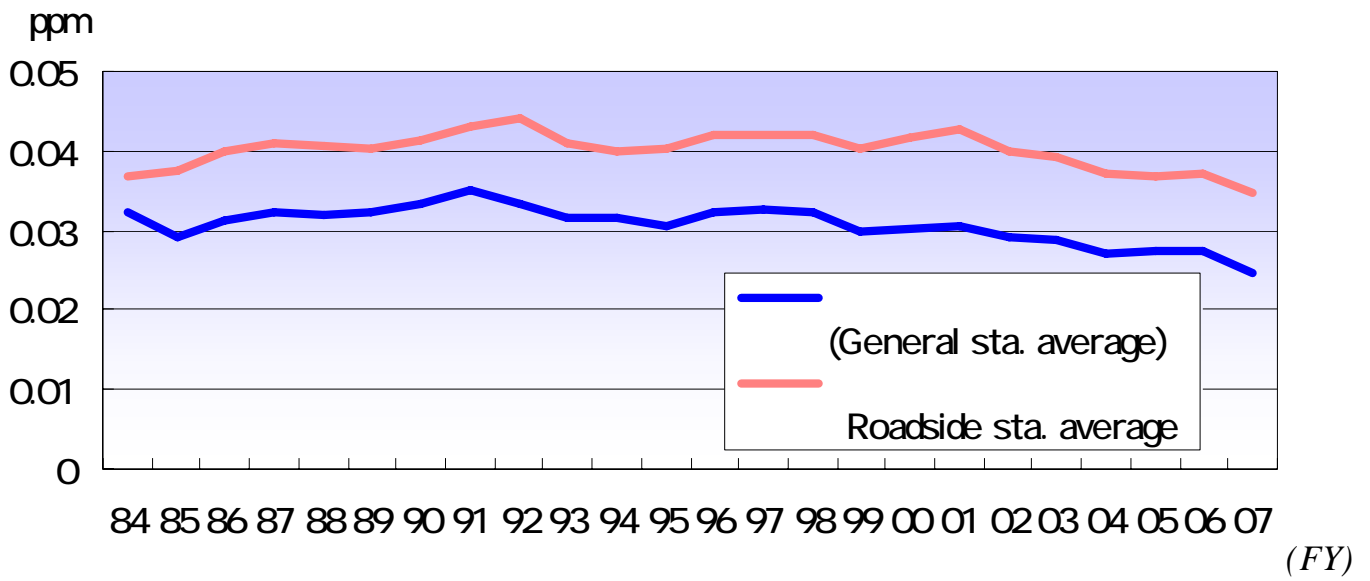
1978 1983

4

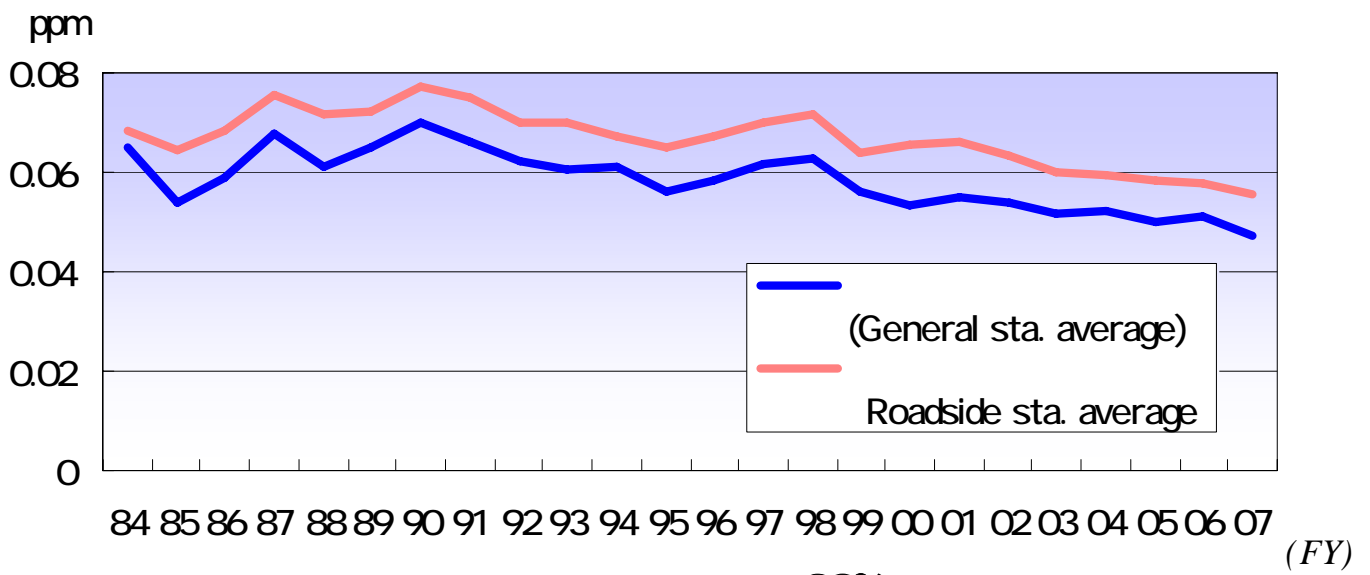
60 12

1991  
2000

2000



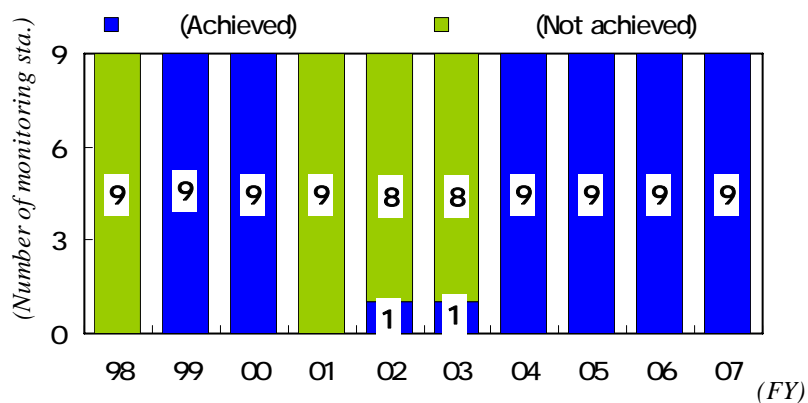
(Trend of annual average for NO<sub>2</sub>)



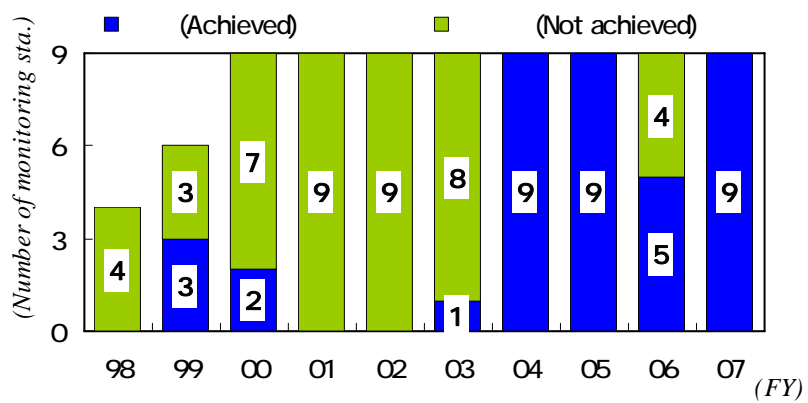
**98%**  
(Trend of 98% value of daily average for NO<sub>2</sub>)

(SPM Suspended Particulate Matter)

Situation of achievement for EQS



(Situation of achievement for EQS of SPM :General sta.)



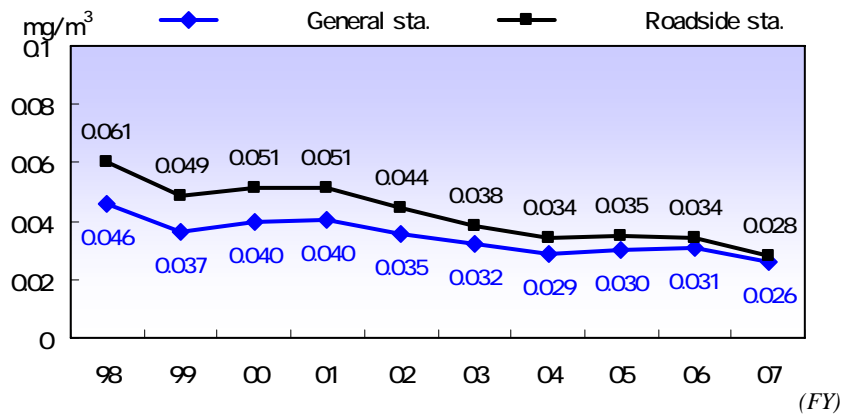
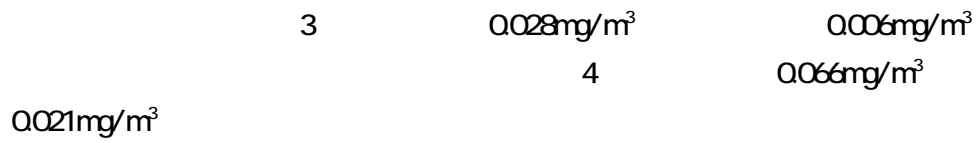
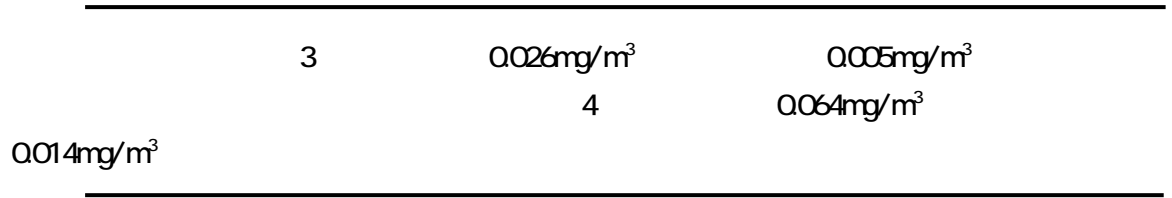
(Situation of achievement for EQS of SPM :Roadside sta.)



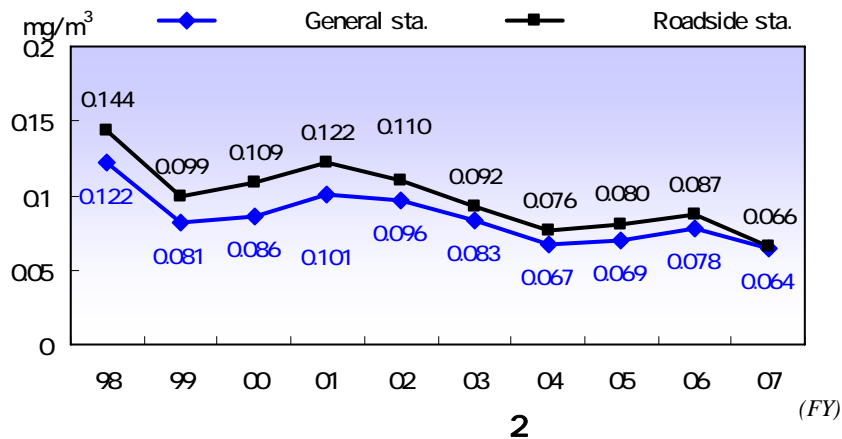


Trend of annual average and 2%-exceeded value of daily average

2001



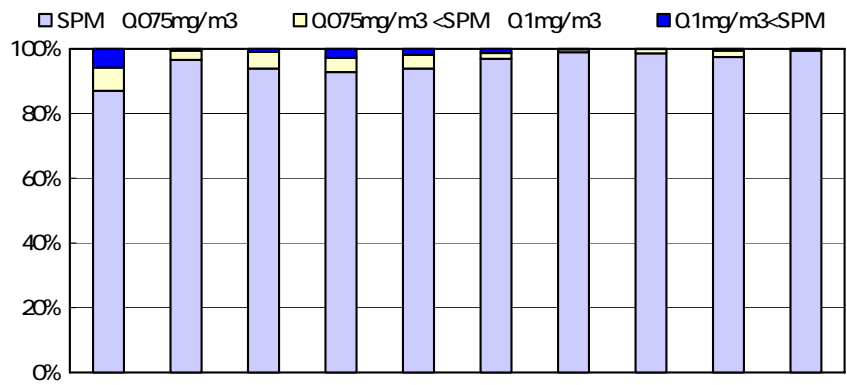
(Trend of annual average for SPM)



(Trend of 2%-exceeded value of daily average for SPM)

Days that adapted to EQS and environmental target value in Kawasaki City , and its rate

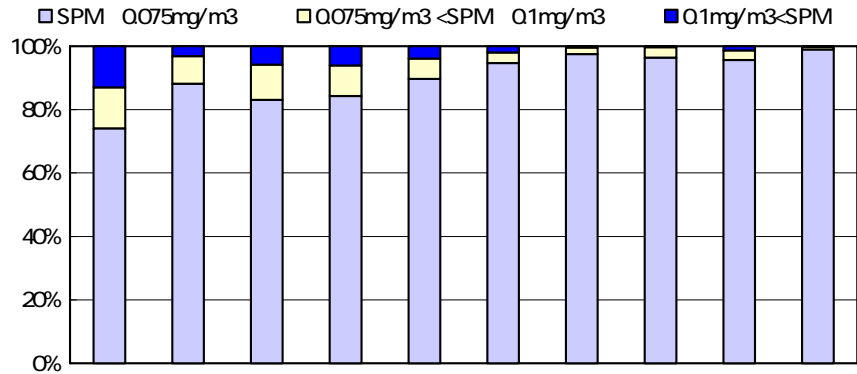
		0.10mg/m <sup>3</sup>		1	0.20mg/m <sup>3</sup>		
	2002		2003	98			2007
	99.4	100	99.8	99.7	100	99.9	
			0.075mg/m <sup>3</sup>				2003
		96		94			
2007		98.3	99.7	99.0	98.6	99.7	99.4
		1(P20)		(	0.0125mg/m <sup>3</sup>	)	2007



FY		98	99	00	01	02	03	04	05	06	07
0.1mg/m³ SPM( )	(days)	188	20	33	91	61	43	5	4	20	3
		5.8	0.6	1.0	2.8	1.9	1.3	0.2	0.1	0.6	0.1
SPM( ) 0.1mg/m³	(days)	3042	3230	3214	3155	3147	3145	3199	3130	3183	3236
	SPM(1 ) 0.2mg/m³	94.2	99.4	99.0	97.2	98.1	98.7	99.8	99.9	99.4	99.9
0.075mg/m³ SPM	(days)	231	92	166	143	135	57	29	41	61	18
		7.2	2.8	5.1	4.4	4.2	1.8	0.9	1.3	1.9	0.5
SPM < 0.075mg/m³	(days)	2811	3138	3048	3012	3012	3088	3170	3089	3122	3218
		87.0	96.6	93.9	92.8	93.9	96.9	98.9	98.6	97.5	99.4

) ( ) 9  
**SPM**

(Trend of concentration distribution of daily average for SPM : General sta.)

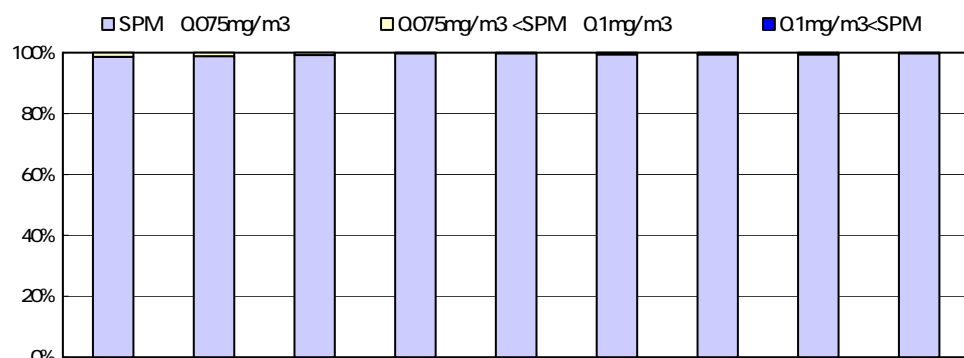


FY		98	99	00	01	02	03	04	05	06	07
0.1mg/m³ SPM( )	(days)	188	69	185	198	127	65	13	10	41	6
		130	3.2	5.8	6.1	3.9	2.0	0.4	0.3	1.3	0.2
SPM( ) 0.1mg/m³	(days)	1260	2083	2984	3038	3101	3183	3207	3224	3181	3239
	SPM(1 ) 0.2mg/m³	87.0	96.8	94.2	93.9	96.1	98.0	99.6	99.7	98.7	99.8
0.075mg/m³ SPM	(days)	187	184	351	310	204	106	66	107	96	27
		12.9	8.6	11.1	9.6	6.4	3.3	2.1	3.3	3.0	0.8
SPM < 0.075mg/m³	(days)	1073	1899	2633	2728	2897	3077	3141	3117	3085	3212
		74.1	88.2	83.1	84.3	89.7	94.7	97.5	96.4	95.7	99.0

) ( ) 9  
**SPM**

(Trend of concentration distribution of daily average for SPM : Roadside sta.)



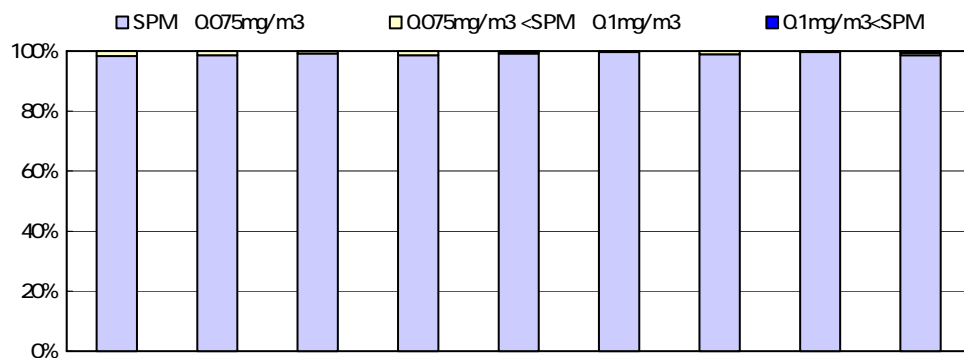


(Monitoring sta.)		(Daishi)	(Tajima)	(Kawasaki)	(Saiwai)	(Nakahara)	(Takatsu)	(Miyamae)	(Tama)	(Asao)
0.1mg/m <sup>3</sup> SPM( )	(days)	0	0	0	1	0	1	0	0	1
0.2mg/m <sup>3</sup> SPM(1 )		0	0	0	0.3	0	0.3	0	0	0.3
SPM( ) 0.1mg/m <sup>3</sup>	(days)	359	360	361	360	354	361	358	362	361
SPM(1 ) 0.2mg/m <sup>3</sup>		100	100	100	99.7	100	99.7	100	100	99.7
0.075mg/m <sup>3</sup> SPM	(days)	5	4	3	0	1	1	2	2	0
	0.1mg/m <sup>3</sup>	1.4	1.1	0.8	0	0.3	0.3	0.6	0.6	0
SPM 0.075mg/m <sup>3</sup>	(days)	354	356	358	360	353	360	356	360	361
		98.6	98.9	99.2	99.7	99.7	99.4	99.4	99.4	99.7

### SPM 2007

(Concentration distribution of daily average for SPM : General sta. FY 2007)

7



(Monitoring sta.)		(Ikegami)	(Nissincho)	(Shiyakusho-mae)	(Endohcho)	(Nakahara-heiwakouen)	(Futago)	(Miyamae-dairaekimae)	(Honmura-bashi)	(Kakio)
0.1mg/m <sup>3</sup> SPM( )	(days)	0	0	0	0	1	1	0	2	2
0.2mg/m <sup>3</sup> SPM(1 )		0	0	0	0	0.3	0.3	0	0.6	0.5
SPM( ) 0.1mg/m <sup>3</sup>	(days)	359	354	361	362	361	359	361	360	362
SPM(1 ) 0.2mg/m <sup>3</sup>		100	100	100	100	99.7	99.7	100	99.4	99.5
0.075mg/m <sup>3</sup> SPM	(days)	6	5	3	5	2	0	4	0	5
	0.1mg/m <sup>3</sup>	1.7	1.4	0.8	1.4	0.6	0	1.1	0	1.4
SPM 0.075mg/m <sup>3</sup>	(days)	353	349	358	357	359	359	357	361	359
		98.3	98.6	99.2	98.6	99.2	99.7	98.9	99.7	98.6

### SPM 2007

(Concentration distribution of daily average for SPM : Roadside sta. FY 2007)

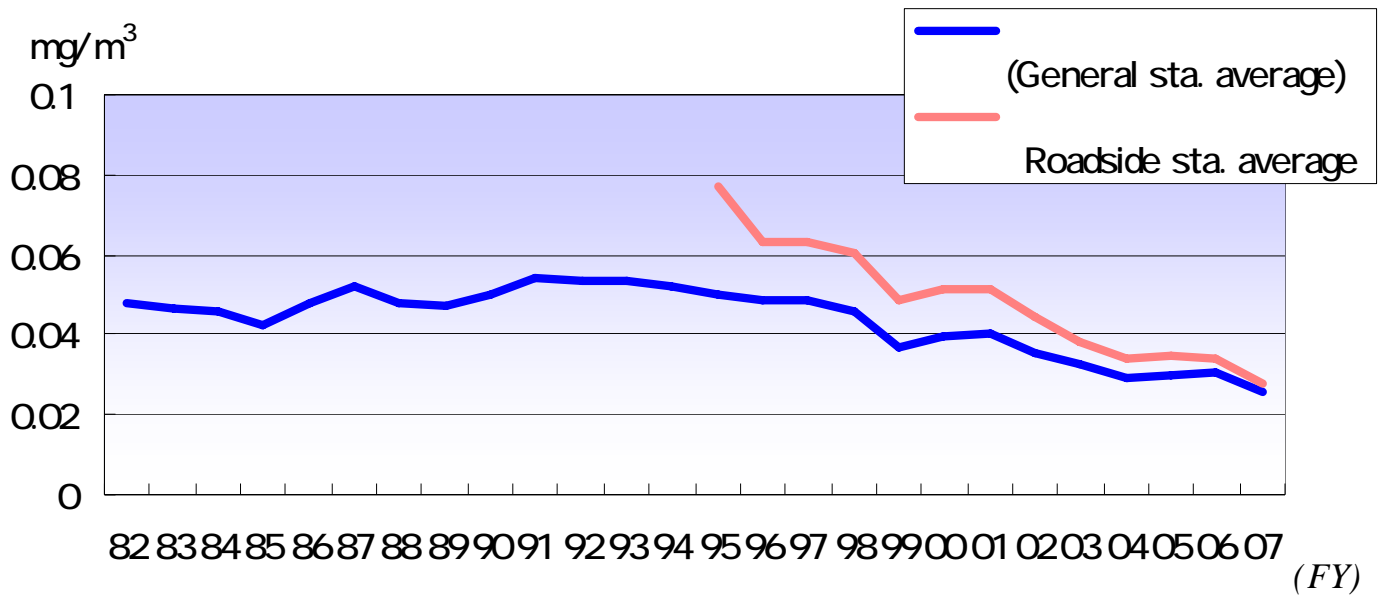
(Trend of annual average for SPM)

mg/m<sup>3</sup>

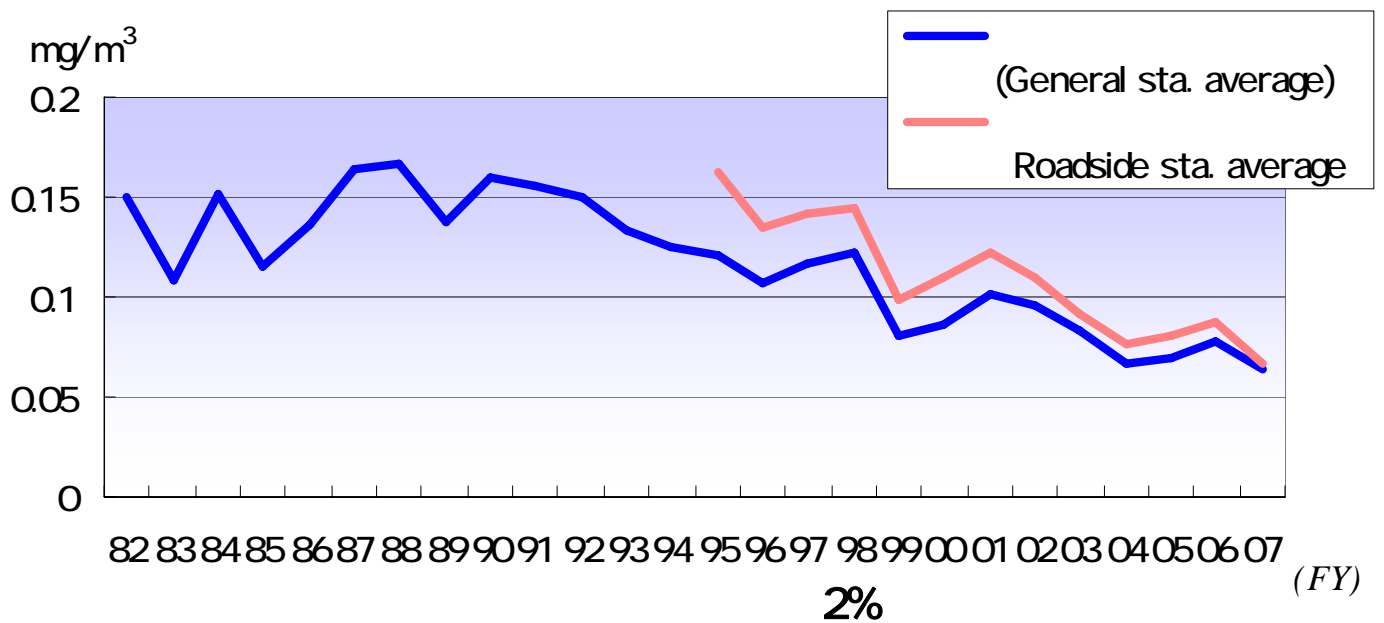
(FY)	82	83	84	85	86	87	88	89	90	91	92	93	94	95	96	97	98	99	00	01	02	03	04	05	06	07	
(General sta.)	(Daishi)	0047	0049	0051	(0036)	0048	0051	0048	0059	0061	0066	0059	0053	0052	0042	0046	0049	0046	0037	0042	0044	0038	0033	0030	0032	0033	0028
	(Taiima)	(0056)	0046	0045	0044	0054	0061	0056	0059	0059	0062	0060	0057	0057	0049	0047	0048	0045	0036	0039	0040	0034	0032	0031	0031	0032	0026
	(Kawasaki)	0050	0046	0043	0043	0051	0051	0049	0058	0062	0066	0060	0056	0055	0046	0048	0050	0048	0037	0043	0042	0037	0033	0031	0033	0032	0026
	Saiwai hokenfukusisentâ	0053	0046	0050	0043	0050	0051	0051	0046	0047	0047	0055	0053	0049	0051	0048	0047	0047	0036	0041	0039	0036	0032	0031			
	(Saiwai)																								0031	0035	0028
	(Nakahara)	0049	0048	0048	0044	0047	0053	0044	0043	0044	0046	0048	0051	0051	0052	0048	0046	0043	0034	0037	0033	0033	0030	0026	0028	0029	0026
	(Takatsu)	0049	0049	0047	0045	0050	0052	0050	0044	0045	0043	0045	0055	0056	0055	0050	0049	0048	0038	0041	0040	0035	0033	0028	0030	0030	0026
	(Miyamae:saginuma)	0045	0048	0046	0043	0046	0051	0050	0040	0046	0049	0048	0055	0053	0048	0053	0053	0050	0039	0039	0043	0037	0034				
	(Miyamae)																										
	(Tama:hokenjyo)	0052	0048	0047	0046	0050	0058	0046	0044	0047	0064	0062															
	(Tama)												0051	0053	0058	0053	0049	0046	0037	0037	0044	0038	0035	0031	0032	0031	0024
	(Asao)	0038	0037	0037	0033	0035	0041	0035	0035	0042	0047	0044	0049	0045	0048	0046	0046	0042	0035	0039	0037	0031	0030	0027	0028	0029	0025
	(General sta. Average)	0048	0046	0046	0043	0048	0052	0048	0048	0050	0054	0053	0053	0052	0050	0049	0049	0046	0037	0040	0040	0035	0032	0029	0030	0031	0026
Roadside sta.	(Ikegami)													0077	0073	0074	0071	0061	0064	0063	0050	0040	0039	0039	0042	0031	
	(Shinkawadori)																	0046	0050	0051	0045						
	(Nissincho)																					0035	0030	0032	0031	0026	
	(Shiyakushomae)																		0046	0046	0041	0037	0033	0033	0032	0026	
	(Endohcho)																		0058	0057	0049	0043	0037	0036	0037	0028	
	(Nakaharaheiwakouen)														0054	0058	0052	0039	0043	0041	0041	0036	0032	0033	0031	0027	
	(Futago)																0065	0055	0058	0061	0051	0045	0038	0039	0037	0029	
	(Maginu)																		0047								
	(Miyamaedairakimae)																			0054	0043	0040	0035	0037	0035	0030	
	(Honmurabashi)																0058	0054	0043	0046	0045	0038	0033	0031	0032	0030	0026
	(Kakio)																		0049	0048	0045	0041	0037	0033	0032	0032	0027
(Roadside sta. Average)														0077	0064	0063	0061	0049	0051	0051	0044	0038	0034	0035	0034	0028	

mg/m<sup>3</sup>

(FY)	82	83	84	85	86	87	88	89	90	91	92	93	94	95	96	97	98	99	00	01	02	03	04	05	06	07	
(General sta.)	(Daishi)	0157	0112	0178	(0080)	0146	0178	0183	0172	0176	0165	0168	0137	0114	0095	0102	0115	0121	0080	0093	0132	0110	0092	0068	0078	0094	0074
	(Taiima)	(0169)	0109	0168	0107	0144	0165	0127	0155	0171	0193	0169	0142	0135	0120	0110	0116	0121	0079	0088	0103	0094	0081	0071	0074	0089	0067
	(Kawasaki)	0166	0109	0159	0117	0143	0169	0198	0153	0180	0196	0169	0133	0140	0106	0109	0125	0130	0084	0094	0104	0092	0092	0078	0081	0080	0065
	Saiwai hokenfukusisentâ	0169	0105	0173	0122	0148	0168	0210	0146	0158	0157	0138	0145	0112	0121	0101	0113	0119	0084	0083	0090	0094	0078	0071			
	(Saiwai)																								0067	0081	0064
	(Nakahara)	0161	0113	0161	0124	0133	0170	0142	0132	0159	0128	0132	0134	0127	0127	0099	0105	0114	0077	0081	0085	0096	0076	0060	0060	0066	0060
	(Takatsu)	0156	0115	0149	0117	0144	0165	0197	0125	0154	0117	0143	0128	0130	0139	0110	0115	0122	0083	0088	0093	0089	0074	0060	0064	0071	0063
	(Miyamae:saginuma)	0135	0111	0136	0118	0125	0165	0218	0127	0163	0161	0151	0128	0128	0121	0116	0128	0130	0085	0086	0102	0103	0095				
	(Miyamae)																							0065	0063	0078	0059
	(Tama:hokenjyo)	0154	0113	0135	0122	0147	0170	0135	0127	0155	0164	0165															
	(Tama)												0141	0131	0147	0122	0125	0129	0085	0082	0115	0102	0090	0072	0078	0081	0061
	(Asao)	0102	0084	0107	0097	0099	0128	0094	0096	0121	0122	0119	0118	0112	0116	0097	0105	0109	0074	0082	0085	0084	0068	0058	0060	0066	0060
	(General sta. Average)	0150	0108	0152	0116	0137	0164	0167	0137	0160	0156	0150	0134	0125	0121	0107	0116	0122	0081	0086	0101	0096	0083	0067	0069	0078	0064
Roadside sta.	(Ikegami)													0162	0144	0155	0165	0120	0125	0169	0115	0094	0082	0087	0105	0069	
	(Shinkawadori)																	0096	0109	0124	0107						
	(Nissincho)																					0090	0067	0081	0083	0069	
	(Shiyakushomae)																		0101	0119	0103	0095	0074	0075	0077	0062	
	(Endohcho)																		0130	0126	0111	0103	0083	0079	0106	0068	
	(Nakaharaheiwakouen)														0125	0146	0142	0085	0098	0095	0112	0091	0077	0080	0081	0063	
	(Futago)																0144	0106	0114	0135	0120	0095	0080	0085	0090	0061	
	(Maginu)																		0111								
	(Miyamaedairaekimae)																			0129	0116	0099	0080	0083	0095	0072	
	(Honmurabashi)															0125	0125	0085	0093	0102	0095	0078	0068	0076	0064	0060	
	(Kakio)																		0103	0103	0102	0107	0083	0072	0078	0082	0072
(Roadside sta. Average)														0162	0135	0142	0144	0099	0109	0122	0110	0092	0076	0080	0087	0066	



*(Trend of annual average for SPM)*



*(Trend of 2%-exceeded value of daily average for SPM)*

Ox Photochemical Oxidant

Situation of achievement for EQS

0.06ppm

1

Ox)

(Measurement Result and assessment for Ox)

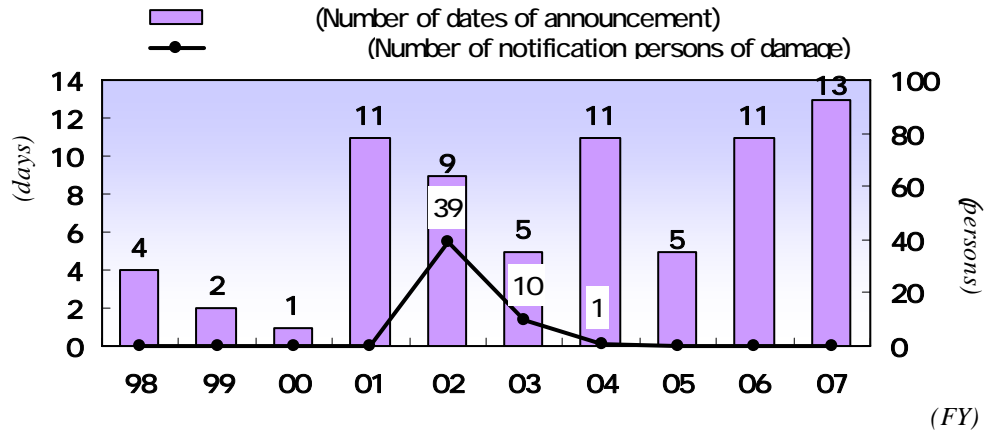
(Monitoring station)	(Assessment of EQS)			(Valid monitoring hours in the daytime)	( 2 (Hours rate that adapted to EQS in the daytime)	0.12ppm				(Maximum 1-hour value in the daytime)	(Annual average in the daytime)
	0.06ppm		1 (Assessment)			(Days that 1-hour value in the daytime is 0.12ppm or above, and its rate. Hours that 1-hour value in the daytime is 0.12ppm or above , and its rate)					
	(Hours that 1-hour value in the daytime is above 0.06ppm , and its rate)	(hours)				(days)	(hours)	(hours)			
(Daishi)	223	4.2	×	5372	95.8	4	1.1	5	0.1	0.179	0.025
(Tajima)	233	4.3	×	5377	95.7	8	2.2	11	0.2	0.209	0.026
(Kawasaki)	306	5.7	×	5367	94.3	7	1.9	13	0.2	0.187	0.026
(Saiwai)	416	7.8	×	5333	92.2	9	2.5	16	0.3	0.166	0.029
(Nakahara)	424	8.0	×	5326	92.0	9	2.5	15	0.3	0.154	0.028
(Takatsu)	523	9.8	×	5361	90.2	13	3.6	25	0.5	0.170	0.030
(Miyamae)	529	9.9	×	5366	90.1	10	2.7	24	0.4	0.162	0.030
(Tama)	376	7.0	×	5341	93.0	8	2.2	15	0.3	0.143	0.029
(Asao)	354	6.7	×	5319	93.3	7	1.9	15	0.3	0.181	0.029

1 1 0.06ppm  
×

2 1 0.06ppm

Announcement situation of photochemical smog warnings

1



(Number of dates of announcement for photochemical smog warnings and number of notification persons of damage)

1

2

(Announcement situation of photochemical smog warnings)

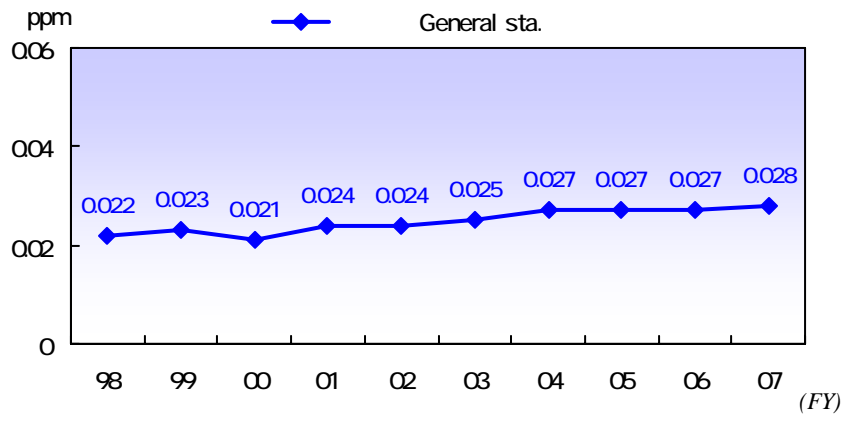
(Times of announcement)	(Date of announcement)	(Time)	(Maximum ppm)	(Station of maximum)	Q12ppm (Station that 1-hour value is 0.12ppm or above)	(Announcement situation of photochemical smog warnings in Kanagawa prefecture except Kawasaki city)
1	5 9	16 20 17 40	Q124		4	
2	6 19	14 20 15 20	Q141		7	
3	7 26	13 20 16 30	Q140		5	
4	7 27	14 20 16 20	Q139		6	
5	8 10	13 20 17 20	Q149		9	
6	8 11	13 20 17 00	Q209		9	
7	8 16	12 20 14 20	Q123		2	
8	8 17	16 20 18 00	Q141		5	
9	8 20	14 20 17 00	Q146		7	
10	8 25	15 20 16 30	Q134		8	
11	8 26	13 20 15 30	Q170		8	
12	8 28	16 20 18 00	Q124		1	
13	9 22	15 20 16 20	Q127		2	

5 24 6 23 6 27 7 24 7 29 8 24 9 14

*Trend of annual average*

0.028ppm

0.001ppm



*(Trend of annual average in the daytime for Ox)*

(Number of dates of announcement for photochemical smog warnings and number of notification persons of damage)

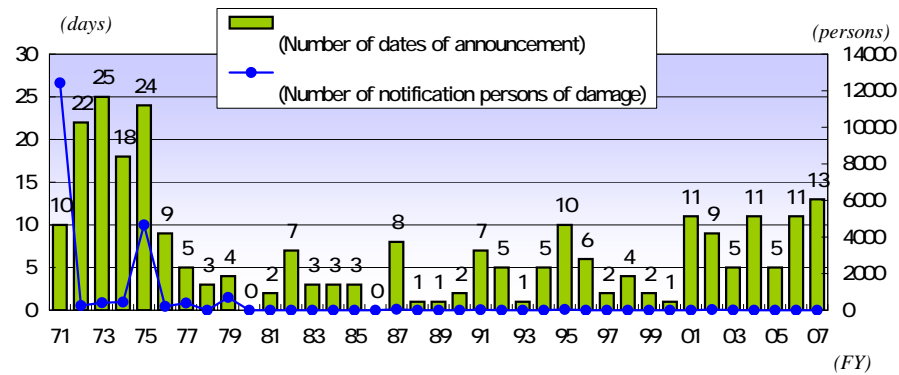
(FY)	71	72	73	74	75	76	77	78	79	80	81	82	83	84	85	86	87	88	89
(Number of dates of announcement)	10	22	25	18	24	9	5	3	4	0	2	7	3	3	3	0	8	1	1
(Number of notification persons of damage)	12425	251	408	450	4662	206	396	0	698	0	4	4	0	0	1	0	50	0	0

(FY)	90	91	92	93	94	95	96	97	98	99	00	01	02	03	04	05	06	07
(Number of dates of announcement)	2	7	5	1	5	10	6	2	4	2	1	11	9	5	11	5	11	13
(Number of notification persons of damage)	0	22	0	0	0	46	0	0	0	0	0	0	39	10	1	0	0	0

1972

1975

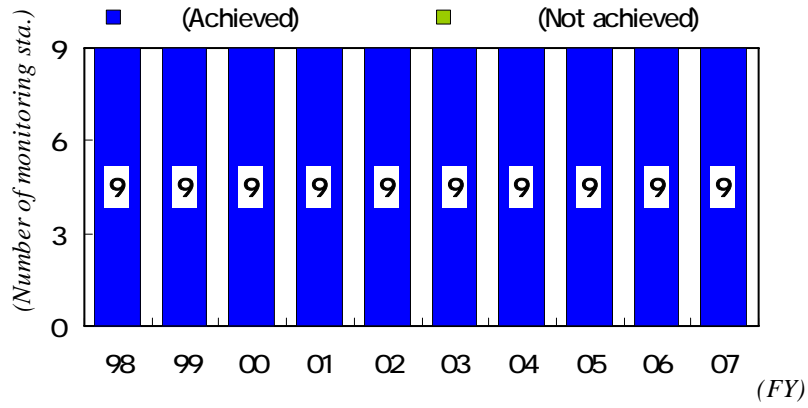
1



(Number of dates of announcement for photochemical smog warnings and number of notification persons of damage)

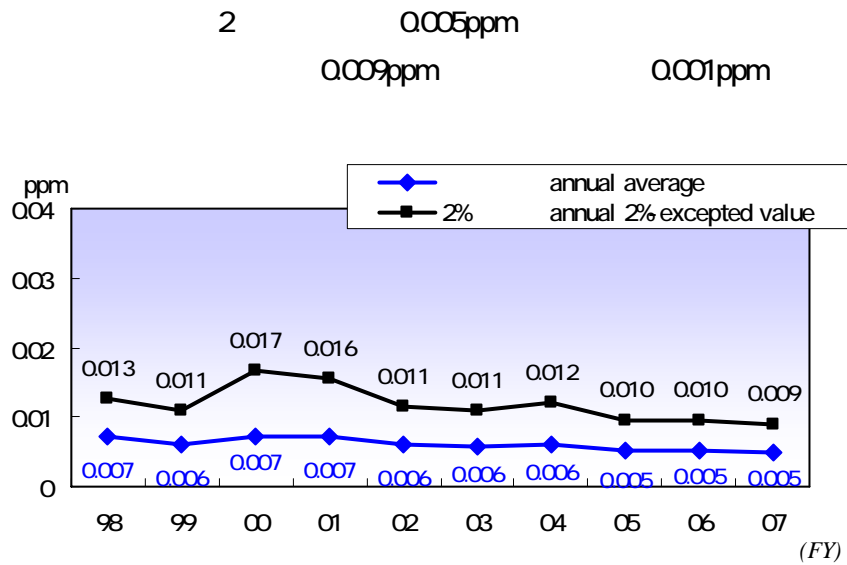






(Situation of achievement for EQS of SO<sub>2</sub>)

Trend of annual average and 2%-excepted value of daily average



2

(Trend of annual average and 2%-excepted value of daily average for SO<sub>2</sub>)

(Frequency of occurrence of high concentration)

2000

01ppm

2007

01ppm

2

1

01ppm

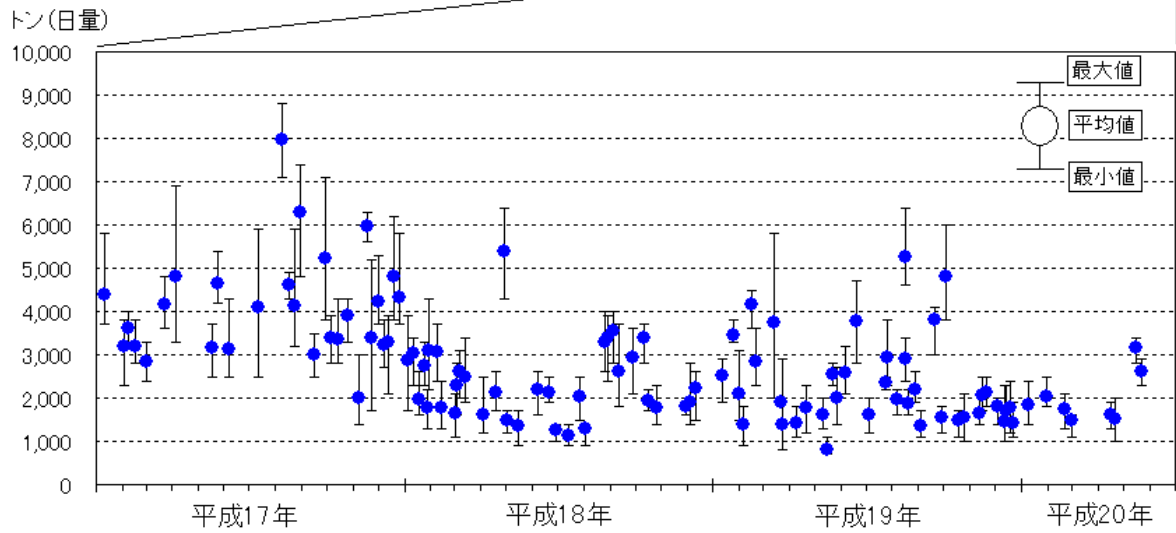
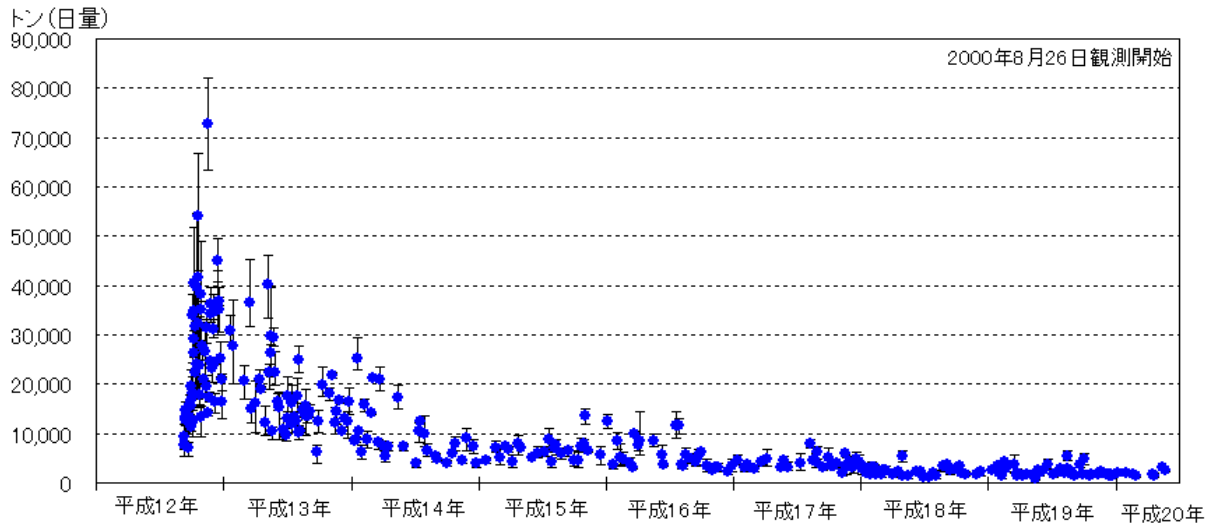
(Number of times that 1-hour value is above 0.1ppm for SO<sub>2</sub>)

(hour)

(FY)		98	99	00	01	02	03	04	05	06	07
(General sta.)	(Daishi)	0	0	2	4	2	0	2	0	0	0
	(Tajima)	0	0	4	7	2	0	2	0	0	0
	(Kawasaki)	0	0	4	5	2	0	1	0	0	0
	Saiwai hokenfukusisentā	1	0	5	4	2	0	1			
	(Saiwai)								0	0	0
	(Nakahara)	0	0	7	7	0	0	0	0	0	0
	(Takatsu)	0	0	8	3	0	1	0	0	0	0
	Miyamae,saginuma)	0	0	6	4	0	0				
	(Miyamae)							0	0	0	0
	(Tama)	0	0	3	1	0	0	0	0	0	0
	(Asao)	0	0	4	1	0	0	0	1	0	0
	(Total)	1	0	43	36	8	1	6	1	0	0

( ) ( )

(SO<sub>2</sub> ejection volume by Volcanic Gases from Miyakejima)



(Trend of annual average for SO<sub>2</sub>)

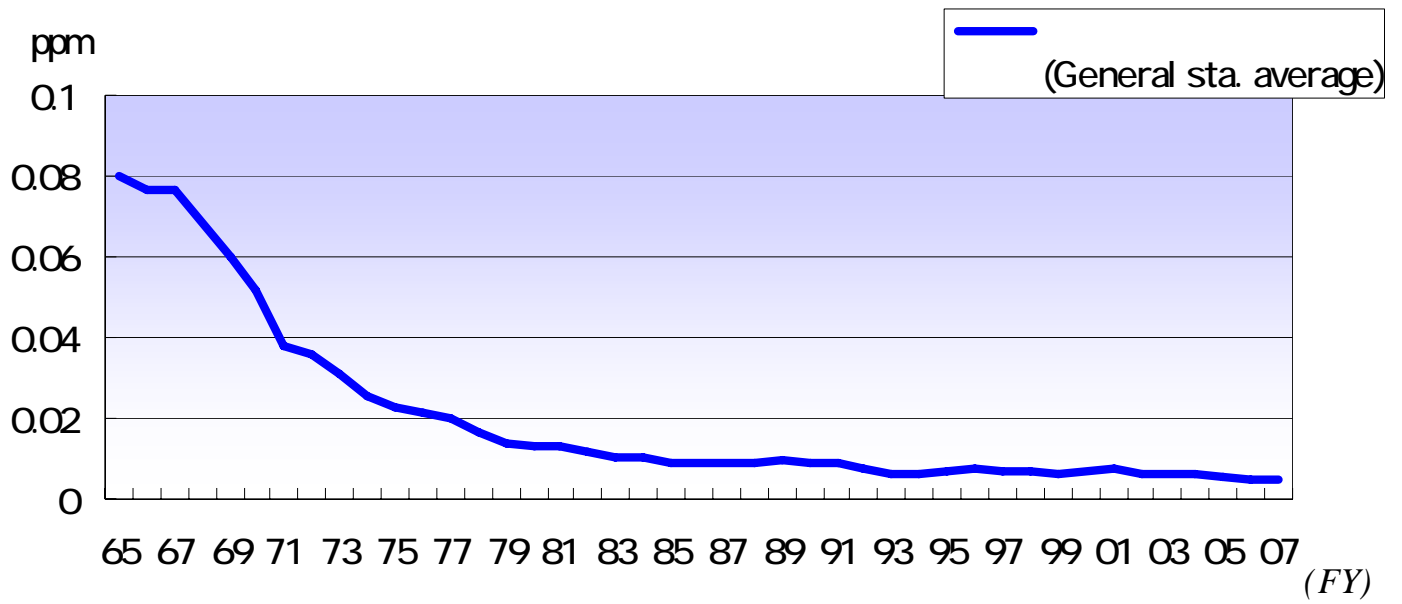
		ppm																																																	
(FY)		65	66	67	68	69	70	71	72	73	74	75	76	77	78	79	80	81	82	83	84	85	86	87	88	89	90	91	92	93	94	95	96	97	98	99	00	01	02	03	04	05	06	07							
(General sta.)	(Daishi)	0110	0110	0100	(0070)	0065	0052	0049	0048	0040	0030	0027	0024	0016	0019	0016	0016	0014	0012	0012	0012	0011	0010	0011	0011	0011	0010	0010	0009	0007	0008	0008	0009	0008	0009	0007	0009	0009	0008	0007	0008	0007	0007	0007	0007	0007					
	(Tajima)				0084	0082	0075	0062	0058	0045	0036	0028	0029	0028	0019	0016	0015	0014	0012	0012	0012	0011	0010	0010	0010	0011	0011	0010	0010	0009	0008	0008	0008	0009	0008	0008	0007	0008	0009	0007	0007	0007	0007	0007	0007	0007	0006				
	(Kawasaki)	0080	0080	0080	0070	0061	0051	0048	0039	0040	0034	0029	0024	0022	0020	0015	0015	0015	0014	0014	0013	0012	0011	0012	0012	0012	0012	0010	0011	0009	0007	0007	0008	0009	0008	0009	0008	0009	0008	0009	0008	0008	0008	0008	0008	0007	0007				
	Saiwai hokenfukusisenta							0037	0035	0032	0024	0023	0019	0023	0021	0015	0015	0015	0013	0012	0011	0010	0009	0010	0010	0011	0010	0010	0008	0006	0007	0007	0008	0008	0008	0007	0008	0008	0006	0006	0006	0006	0006	0006	0006	0005	0005				
	(Saiwai)																																															0006	0005	0005	
	(Nakahara)	0050	0040	0050	0050	0031	0028	0024	0020	0018	0017	0015	0016	0015	0013	0013	0012	0012	0011	0010	0010	0009	0009	0009	0009	0010	0009	0009	0007	0006	0006	0006	0006	0008	0007	0007	0006	0007	0007	0005	0006	0005	0005	0005	0004	0004	0004				
	(Takatsu)							0029	0029	0022	0021	0020	0021	0020	0015	0016	0014	0014	0013	0010	0010	0009	0009	0010	0009	0010	0010	0009	0008	0006	0006	0007	0008	0007	0007	0006	0007	0007	0006	0007	0007	0006	0005	0006	0004	0004	0004	0004			
	(Miyamae:saginuma)															0011	0010	0010	0009	0008	0008	0007	0007	0008	0008	0008	0009	0008	0009	0008	0006	0006	0006	0007	0006	0006	0005	0006	0006	0006	0005	0005	0005	0005	0005	0005	0005	0005	0005		
	(Miyamae)																																															0005	0002	0001	0001
	(Tama:hokenivo)							0016	0024	0018	0018	0015	0017	0015	0012	0014	0013	0013	0012	0008	0008	0007	0006	0007	0007	0008	0008	0007	0006																						
	(Tama)																																																		
	(Asao)																				0011	0010	0010	0008	0007	0007	0006	0006	0006	0006	0006	0005	0004	0005	0006	0005	0005	0004	0005	0005	0005	0005	0005	0005	0005	0005	0005	0004	0004	0004	
(General sta. Average)	0080	0077	0077	0068	0060	0052	0038	0036	0031	0026	0022	0021	0020	0016	0014	0013	0013	0011	0010	0010	0009	0009	0009	0009	0010	0009	0009	0008	0006	0006	0007	0008	0007	0007	0006	0007	0007	0006	0007	0007	0006	0006	0006	0005	0005	0005	0005				

1965 1966

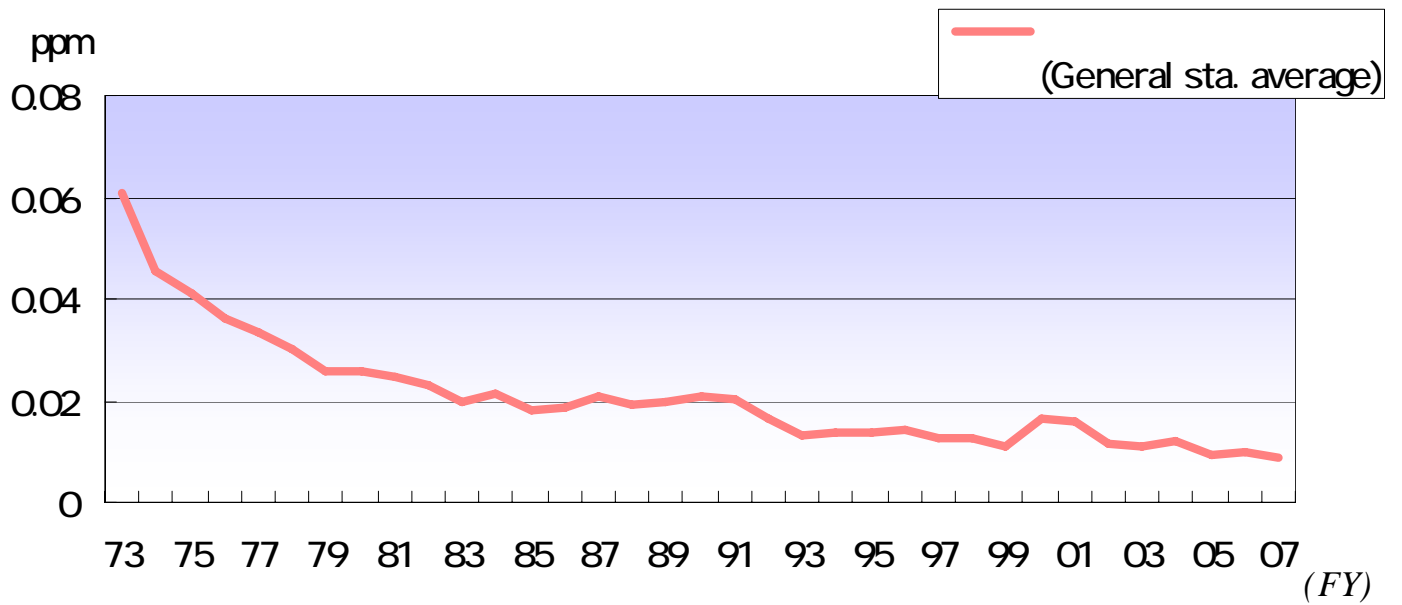
2

(Trend of 2%-exceeded value of daily average for SO<sub>2</sub>)

		ppm																																																	
(FY)		65	66	67	68	69	70	71	72	73	74	75	76	77	78	79	80	81	82	83	84	85	86	87	88	89	90	91	92	93	94	95	96	97	98	99	00	01	02	03	04	05	06	07							
(General sta.)	Daishi									0096	0052	0056	0042	0030	0034	0030	0030	0028	0024	0023	0027	0022	0021	0025	0023	0022	0022	0023	0021	0017	0018	0017	0017	0018	0017	0014	0019	0021	0015	0014	0017	0014	0017	0013	0013						
	Tajima									0086	0060	0055	0047	0048	0035	0032	0031	0028	0026	0024	0026	0022	0022	0025	0023	0023	0025	0025	0019	0016	0017	0016	0018	0015	0016	0016	0016	0016	0014	0018	0018	0014	0014	0016	0013	0014	0012				
	Kawasaki									0067	0052	0047	0041	0034	0036	0028	0029	0026	0029	0024	0027	0022	0023	0026	0026	0023	0022	0023	0018	0014	0015	0016	0016	0016	0016	0014	0015	0014	0018	0018	0014	0014	0016	0013	0014	0012	0012	0012			
	Saiwai hokenfukusisenta									0061	0045	0040	0035	0035	0035	0028	0029	0029	0026	0022	0023	0020	0020	0023	0021	0022	0024	0022	0019	0013	0016	0016	0016	0016	0014	0015	0012	0018	0015	0011	0012	0012	0012	0012	0012	0012	0011	0009	0010		
	Saiwai																																																0011	0009	0010
	Nakahara										0045	0035	0033	0029	0030	0030	0024	0024	0023	0021	0019	0022	0018	0019	0020	0019	0019	0021	0020	0015	0012	0013	0013	0014	0012	0012	0011	0020	0015	0010	0010	0011	0008	0008	0009	0009	0009				
	Takatsu										0038	0034	0032	0033	0033	0024	0026	0024	0025	0025	0020	0021	0018	0019	0021	0019	0020	0021	0020	0018	0012	0012	0014	0014	0011	0011	0010	0017	0015	0011	0010	0011	0007	0007	0008	0008	0008				
	Miyamae:saginuma																0027	0020	0019	0019	0017	0016	0017	0015	0017	0018	0017	0018	0020	0020	0014	0013	0012	0012	0012	0010	0011	0009	0015	0014	0010	0010									
	Miyamae)																																																		
	Tama:hokenivo										0032	0029	0025	0026	0023	0022	0023	0025	0024	0022	0016	0017	0014	0014	0016	0014	0016	0014	0016	0013																					
	Tama																																																		
	Asao																			0020	0020	0019	0016	0014	0014	0012	0012	0013	0013	0014	0014	0011	0011	0009	0009	0011	0009	0009	0008	0013	0013	0008	0008	0010	0007	0006	0006				
(General sta. average)										0061	0045	0041	0036	0033	0030	0026	0026	0025	0023	0020	0022	0018	0019	0021	0019	0020	0021	0020	0016	0013	0013	0014	0014	0013	0013	0011	0017	0016	0011	0011	0012	0010	0010	0009	0008	0008					



*(Trend of annual average for SO<sub>2</sub>)*



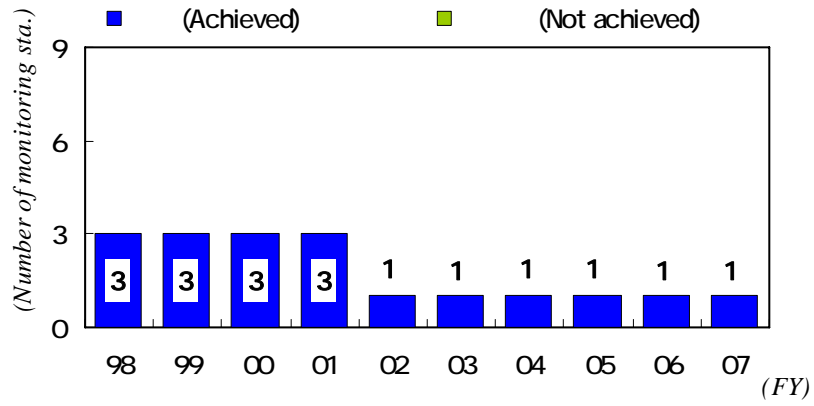
**2%**

*(Trend of 2%-exceeded value of daily average for SO<sub>2</sub>)*

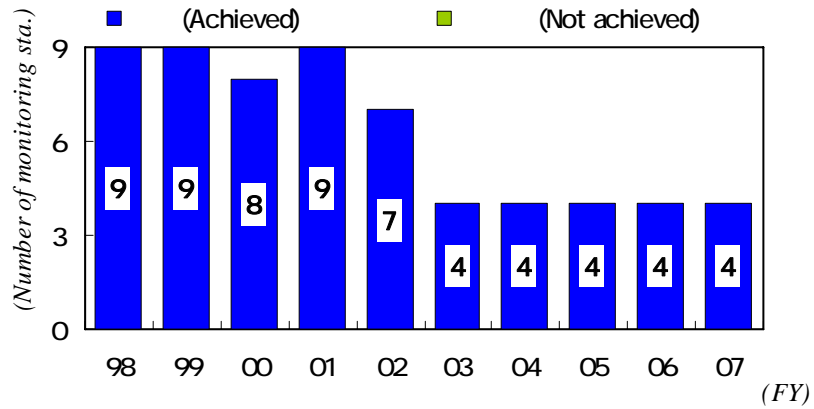
CO Carbon Monoxide

Situation of achievement for EQS

1



(Situation of achievement for EQS of CO :General sta.)



(Situation of achievement for EQS of CO :Roadside sta.)

1 CO)  
(Measurement Result and assessment for CO)

(Monitoring station)		(Assessment of EQS)									(Valid monitoring day)	(Days that adapted to EQS, and its rate)		(Annual average)
		(Long-term assessment)				(Short-term assessment)								
		(2%-excepted value of daily average)	10ppm		(Assessment)	20ppm		10ppm		(Assessment)				
			(times)	×		(times)	(days)	×	(days)					
(General sta.)	(Tajima)	1.0	0	×	0	0	0	0	×	363	363	100	Q4	
(Roadside sta.)	(Ikegami)	1.4	0	×	0	0	0	0	×	364	364	100	Q7	
	(Nissincho)	1.2	0	×	0	0	0	0	×	365	365	100	Q5	
	(Shiyakushomae)	1.1	0	×	0	0	0	0	×	364	364	100	Q6	
	(Endohcho)	1.8	0	×	0	0	0	0	×	362	362	100	Q8	

2      10      10      2  
 8      20      10      10      ×  
 20  
 10ppm



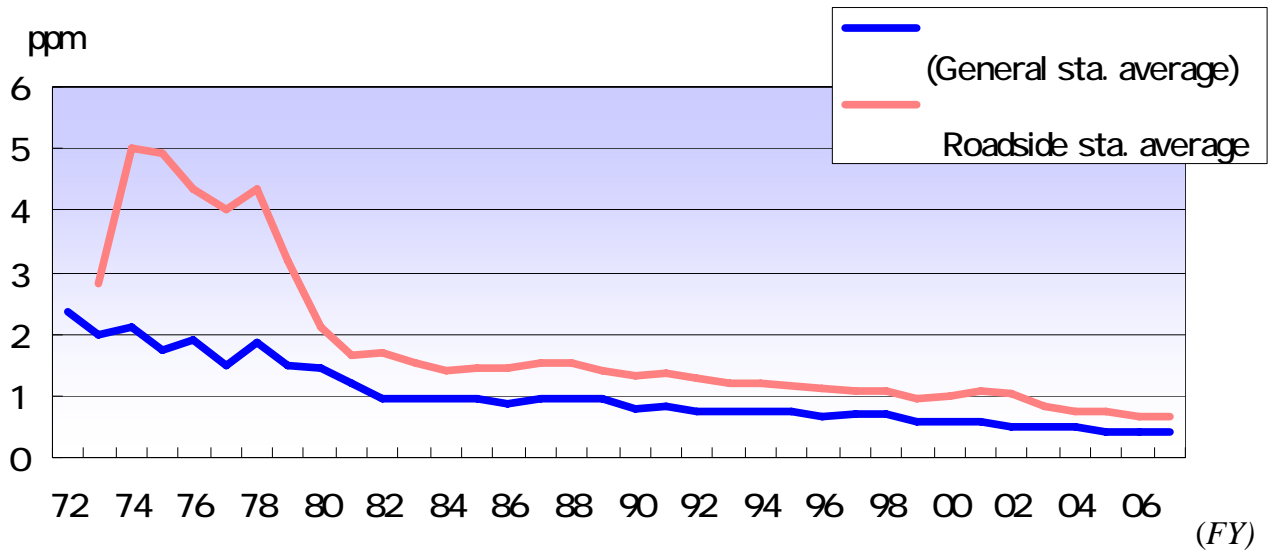


(Trend of annual average for CO)

		ppm																																					
		72	73	74	75	76	77	78	79	80	81	82	83	84	85	86	87	88	89	90	91	92	93	94	95	96	97	98	99	00	01	02	03	04	05	06	07		
General sta.	Daishi	1.8	1.6	(2.5)	1.8	2.3	1.3	1.7	1.2	1.4	1.3																												
	Taiima	26	(21)	26	06	1.4	(1.5)	1.5	1.6	1.0	08	08	08	08	08	08	09	09	08	08	07	07	07	07	06	07	07	06	06	06	05	05	05	05	04	04	04	04	
	Kawasaki	27	22	1.9	1.7	1.2	1.5	1.5	1.7	1.3	1.2	09	1.1	1.1	1.1	1.0	1.1	1.1	1.1	08	09	08	08	08	08	08	08	08	06	06	06								
	Saiwai hokenfukusisenta	23	1.9	1.4	1.6	1.5	1.3	1.9	1.0	1.5	1.4																												
	Nakahara	(2.2)	20	27	28	1.9	1.0	20	(1.4)																														
	Takatsu	(2.8)	21	21	(2.7)	2.4	1.8	2.4	1.8	1.9	1.6	1.1	09	09	09	08	1.0	09	08	08	08	08	07	07	07	07	06	06	06	05	05	05							
	Tama:hokenivo	(2.5)	21	1.9	1.9	2.6	2.1	1.9	1.7	1.7	1.0																												
	(General sta. average)	24	20	21	1.7	1.9	1.5	1.8	1.5	1.5	1.2	09	09	09	09	09	1.0	1.0	09	08	08	07	07	07	07	07	07	07	06	06	06	05	05	05	05	04	04	04	
Roadside sta.	Ikegami									1.4	1.4	1.5	1.4	1.4	1.6	1.5	1.5	1.4	1.4	1.3	1.3	1.3	1.3	1.3	1.2	1.2	1.2	1.0	1.0	09	09	08	08	07	07	07			
	Shinkawadori			(3.3)	29	28	32	(3.5)	28	1.8	1.3	22	1.7	1.5	1.5	1.8	1.7	1.6	1.4	1.4	1.3	1.2	1.2	1.1	1.1	09	1.0	1.0	09	1.0	09								
	Nissincho																																	07	06	06	05	05	
	Shiyakushomae		28	26	30	31	27	27	23	23	26	1.5	1.2	1.2	1.2	1.1	1.1	1.1	1.1	1.1	1.1	1.0	09	1.0	08	09	09	09	07		09	09	08	07	07	07	06		
	Endocho		(8.1)	7.4	8.6	7.2	6.5	(5.7)	(5.1)	(1.9)	20	22	20	1.9	20	1.7	20	22	1.4	1.3	1.3	1.2	1.2	1.0	1.1	1.0	1.0	1.0	09	1.1	1.1	1.1	1.0	09	09	08	08		
	Kiduki		(6.5)	(6.9)	(4.2)	40	37	64	55	(3.1)	(2.3)	20	1.3	1.2	1.2	1.1	1.2	1.1	1.1	1.1	1.1																		
	(Nakaharaheiwakouen)																						(1.3)	1.0	1.0	1.0	07	07	08	07	07	07							
	Takatsuyujiro				5.2	4.7	(3.9)	3.9	4.4	2.7	1.7	1.4	1.4	1.3																									
	Futago															1.5	1.6	1.5	1.4	1.3	1.5	1.4	1.4	1.3	1.2	1.3	1.3	1.4	1.3	1.3	1.4	1.4							
	Maginu								1.5	1.3	1.3	1.4	1.4	1.2	1.4	1.4	1.4	1.4	1.3	1.4	1.3	1.3	1.2	1.2	1.2	1.1	1.0	1.0	09	09									
	Mivamaedairaekimae																																			1.3	1.1		
	Tamakuvakushomae							(3.1)	2.7	2.4	2.2	2.2	2.1	1.8	2.1	2.1	2.1	2.2	2.2	1.7	1.7	(1.2)																	
	Hommurabashi																							(1.6)	1.3	1.4	1.3	1.3	1.1	1.0	09	1.0	08						
	Kakio										0.9	0.8	1.0	1.0	0.9	1.0	1.1	1.1	1.0	1.1	1.5	1.5	1.3	1.4	1.4	1.4	1.3	1.4	1.2	1.2	1.2								
(Roadside sta. average)		28	50	49	44	40	43	32	21	1.7	1.7	1.5	1.4	1.5	1.4	1.5	1.5	1.4	1.3	1.4	1.3	1.2	1.2	1.2	1.1	1.1	1.1	1.0	1.0	1.1	1.0	08	08	07	07	07			

1991  
2000

2000



*(Trend of annual average for CO)*

HC Hydro Carbon

3

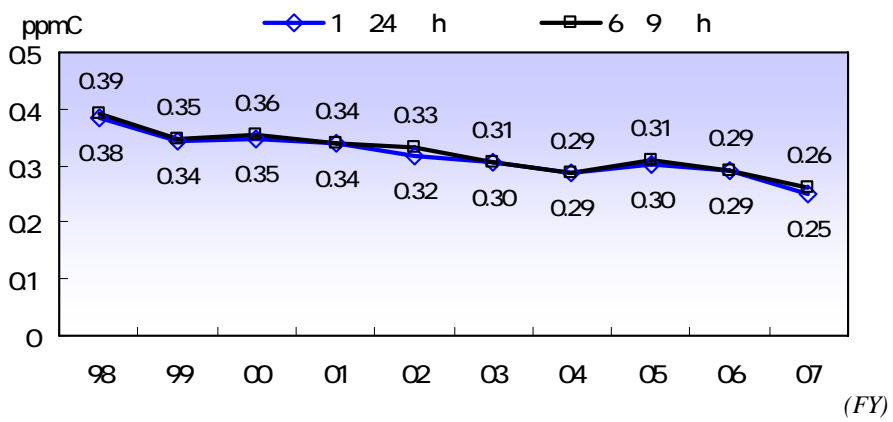
NMHC Non-methane Hydro

Carbon of Trend of annual average and three hours average

2007

2007  
0.04ppmC

0.22 0.30ppmC  
0.21 0.29ppmC  
0.26ppmC  
0.25ppmC  
0.03ppmC



3

(Trend of annual average and 3-hour average for NMHC)

( )

2

0.31ppmC

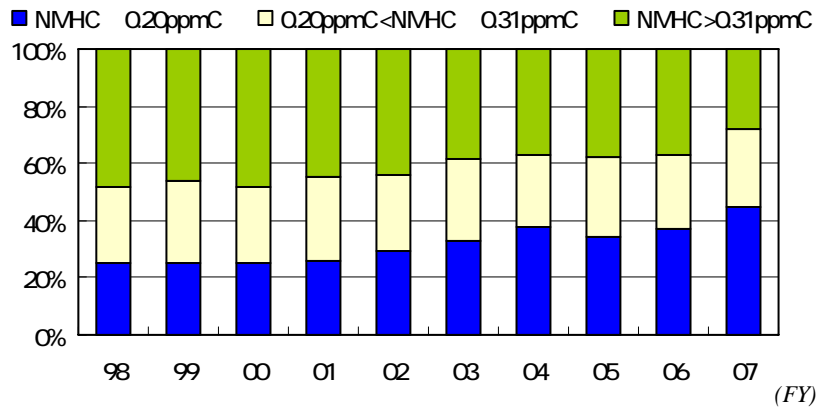
3

0.06ppm

0.20ppmC

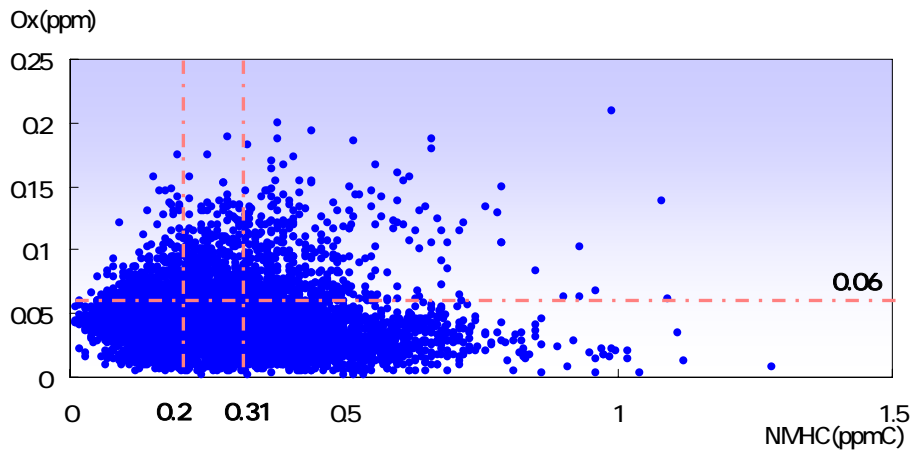
0.31ppmC

0.06ppm



3

Trend of concentration distribution of 3-hour average for NMHC

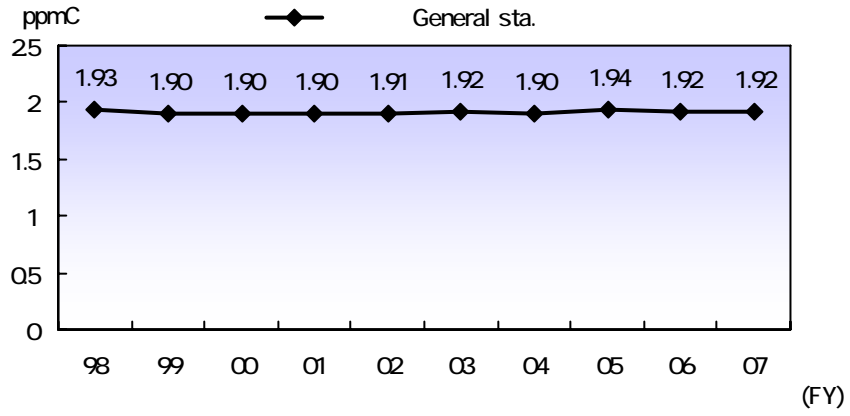


(Relationship between 3-hour average for NMHC and maximum for Ox :FY2005 ~2007)

*CH<sub>4</sub> Methane of Trend of annual average*

1.92ppmC

1.86 1.95ppmC



*(Trend of annual average for CH<sub>4</sub>)*

(Trend of annual average for NMHC)

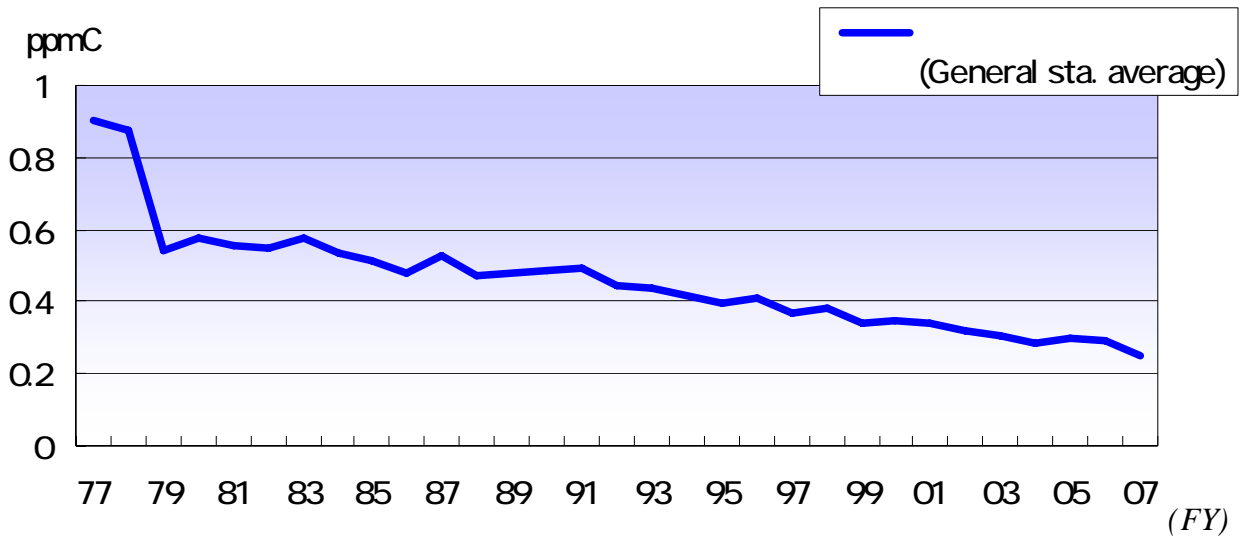
		ppmC																														
(FY)	77	78	79	80	81	82	83	84	85	86	87	88	89	90	91	92	93	94	95	96	97	98	99	00	01	02	03	04	05	06	07	
General sta.	Daishi			(0.62)	(0.56)	0.53	0.53	0.58	0.60	0.57	0.42	0.52	0.47	0.47	0.47	0.43	0.43	0.43	0.42	0.42	0.38	0.36	0.35	0.35	0.40	0.36	0.32	0.33	0.36	0.35	0.28	
	Tajima			0.45	0.47	0.47	0.49	0.50	0.46	0.45	0.43	0.50	0.44	0.50	0.45	0.40	0.40	0.38	0.36	0.37	0.36	0.39	0.34	0.32	0.34	0.33	0.37	0.30	0.27	0.26	0.24	
	Kawasaki	0.99	0.90	0.59	0.60	0.64	(0.56)	(0.73)	0.51	0.52	0.52	0.56	0.53	0.50	0.56	0.52	0.45	0.43	0.43	0.39	0.41	0.36	0.36	0.31	0.32	0.31	0.28	0.27	0.26	0.25	0.25	0.22
	Saiwai hokenfukusisenta						0.61	0.56	0.54	0.51	0.49	0.50	0.46	0.49	0.49	0.50	0.45	0.45	0.44	0.38	0.38	0.37	0.41	0.37	0.46	0.30	0.34	0.28	0.27			
	Saiwai																												0.34	0.31	0.25	
	Nakahara					0.60	0.58	0.60	0.52	0.51	0.58	0.53	0.48	0.48	0.47	0.47	0.41	0.41	0.38	0.36	0.38	0.36	0.37	0.32	0.32	0.34	0.33	0.33	0.27	0.30	0.29	0.29
	Takatsu	0.82	0.85	0.58	0.66	0.62	0.58	0.63	0.64	0.53	0.39	0.55	0.42	0.46	0.52	0.58	0.50	0.50	0.50	0.51	0.52	0.43	0.44	0.38	0.36	0.38	0.34	0.31	0.30	0.31	0.32	0.26
	Tama:hokenjyo			(0.62)	0.57	0.47	0.49	(0.50)	0.48	0.51	0.54	0.53	0.51	0.45	0.46	0.47	0.45															
	Tama																	0.43	0.38	0.36	0.37	0.33	0.36	0.32	0.31	0.30	0.25	0.25	0.27	0.28	0.27	0.21
	(General sta. average)	0.91	0.88	0.54	0.58	0.56	0.55	0.57	0.54	0.51	0.48	0.53	0.47	0.48	0.49	0.49	0.44	0.44	0.42	0.40	0.41	0.37	0.38	0.34	0.35	0.34	0.32	0.30	0.29	0.30	0.29	0.25

(Trend of annual average for CH<sub>4</sub>)

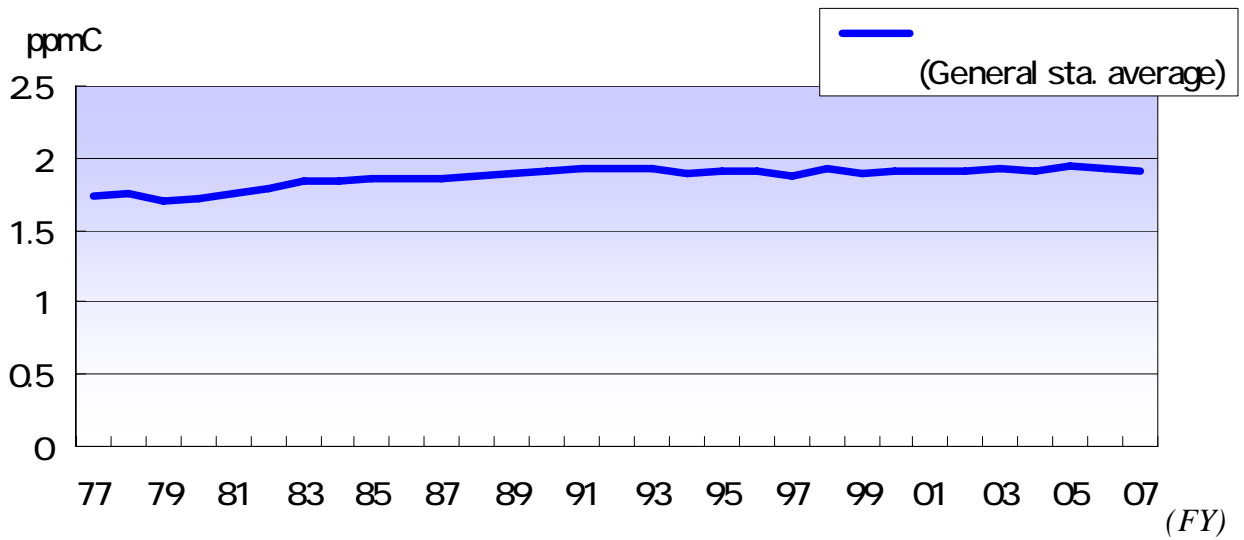
		ppmC																															
(FY)	77	78	79	80	81	82	83	84	85	86	87	88	89	90	91	92	93	94	95	96	97	98	99	00	01	02	03	04	05	06	07		
General sta.	Daishi			(1.72)	(1.75)	1.81	1.83	1.90	1.91	1.92	1.90	1.88	1.94	1.93	1.95	1.97	1.97	1.95	1.93	1.94	1.94	1.90	1.96	1.92	1.93	1.94	1.93	1.94	1.93	1.98	1.96	1.95	
	Tajima			1.66	1.74	1.73	1.76	1.84	1.81	1.85	1.82	1.83	1.84	1.90	1.89	1.92	1.93	1.93	1.91	1.91	1.89	1.87	1.95	1.89	1.89	1.92	1.95	1.97	1.95	2.01	1.98	1.94	
	Kawasaki	1.76	1.81	1.73	(1.75)	1.79	1.80	1.85	1.80	1.89	1.90	1.89	1.91	1.90	1.91	1.93	1.93	1.92	1.91	1.93	1.94	1.90	1.97	1.93	1.94	1.89	1.89	1.90	1.88	1.92	1.90	1.91	
	Saiwai hokenfukusisenta						1.77	1.80	1.82	1.83	1.84	1.86	1.85	1.89	1.89	1.92	1.91	1.90	1.90	1.91	1.92	1.88	1.94	1.90	1.92	1.92	1.94	1.94	1.93				
	Saiwai																												1.97	1.96	1.92		
	Nakahara					1.78	1.83	1.84	1.86	1.87	1.87	1.88	1.95	1.91	1.91	1.95	1.93	1.96	1.91	1.92	1.92	1.90	1.92	1.90	1.87	1.90	1.89	1.92	1.91	1.92	1.90	1.93	
	Takatsu	1.71	1.69	1.70	1.71	1.69	1.76	1.84	1.82	1.77	1.82	1.84	1.84	1.87	1.91	1.90	1.90	1.88	1.87	1.89	1.88	1.85	1.90	1.89	1.89	1.91	1.90	1.91	1.89	1.93	1.91	1.90	
	Tama:hokenjyo			(1.72)	1.73	1.73	1.78	1.83	1.81	1.82	1.85	1.87	1.83	1.85	1.86	1.88	1.88																
	Tama																	1.90	1.87	1.88	1.87	1.82	1.88	1.87	1.88	1.85	1.85	1.86	1.83	1.87	1.86	1.86	
	(General sta. average)	1.74	1.75	1.70	1.73	1.76	1.79	1.84	1.83	1.85	1.86	1.86	1.88	1.89	1.90	1.92	1.92	1.92	1.90	1.91	1.91	1.87	1.93	1.90	1.90	1.91	1.92	1.90	1.94	1.92	1.92	1.92	

(Trend of annual average for THC)

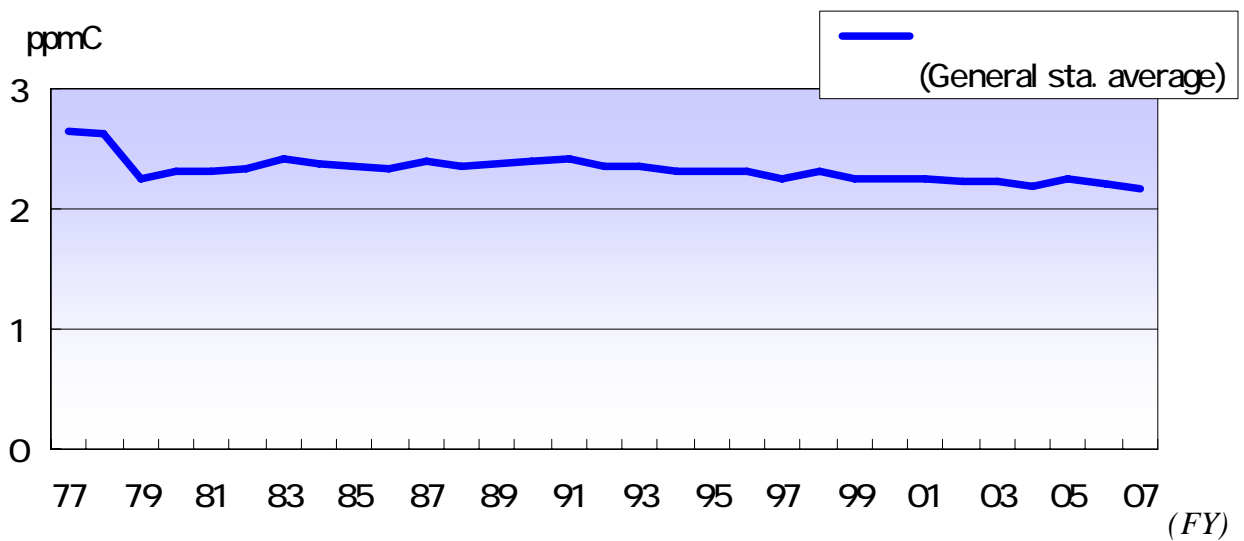
		ppmC																															
(FY)	77	78	79	80	81	82	83	84	85	86	87	88	89	90	91	92	93	94	95	96	97	98	99	00	01	02	03	04	05	06	07		
(General sta.)	(Daishi)			(2.35)	(2.31)	2.34	2.36	2.48	2.51	2.49	2.33	2.40	2.41	2.41	2.42	2.44	2.40	2.38	2.36	2.36	2.36	2.28	2.32	2.27	2.28	2.34	2.29	2.26	2.35	2.31	2.23		
	(Tajima)			2.11	2.20	2.20	2.25	2.34	2.28	2.30	2.25	2.34	2.28	2.39	2.34	2.37	2.33	2.33	2.29	2.26	2.26	2.23	2.34	2.24	2.21	2.26	2.28	2.34	2.26	2.28	2.25	2.19	
	(Kawasaki)	2.75	2.70	2.33	2.35	2.44	(2.36)	(2.59)	2.31	2.41	2.42	2.45	2.44	2.41	2.46	2.45	2.38	2.35	2.34	2.32	2.35	2.25	2.32	2.24	2.26	2.21	2.18	2.17	2.14	2.17	2.15	2.13	
	(Saiwai : hokenfukusisenta)						2.38	2.36	2.37	2.34	2.33	2.35	2.32	2.38	2.38	2.41	2.37	2.36	2.35	2.29	2.30	2.25	2.35	2.27	2.37	2.22	2.28	2.22	2.21				
	(Saiwai)																													2.31	2.27	2.17	
	(Nakahara)					2.38	2.42	2.45	2.38	2.38	2.45	2.41	2.43	2.39	2.38	2.42	2.34	2.36	2.29	2.29	2.30	2.26	2.30	2.22	2.19	2.24	2.22	2.26	2.18	2.23	2.19	2.22	
	(Takatsu)	2.55	2.54	2.28	2.37	2.31	2.34	2.47	2.46	2.30	2.21	2.38	2.26	2.34	2.44	2.48	2.40	2.38	2.37	2.40	2.40	2.28	2.33	2.27	2.25	2.28	2.24	2.22	2.19	2.24	2.23	2.16	
	(Tama:hokenjyo)			(2.34)	2.30	2.20	2.27	(2.32)	2.29	2.33	2.39	2.39	2.35	2.30	2.32	2.35	2.32																
	(Tama)																	2.33	2.25	2.24	2.24	2.15	2.24	2.19	2.18	2.15	2.10	2.10	2.10	2.15	2.13	2.07	
	(General sta. Average)	2.65	2.62	2.24	2.31	2.31	2.34	2.42	2.37	2.36	2.34	2.39	2.36	2.37	2.39	2.42	2.36	2.36	2.32	2.31	2.32	2.24	2.31	2.24	2.25	2.24	2.23	2.22	2.19	2.25	2.22	2.17	



*(Trend of annual average for NMHC)*



*(Trend of annual average for CH<sub>4</sub>)*



*(Trend of annual average for THC)*



(FPM Fine Particulate Matter)

About FPM Monitoring

2000

( ) ( )  
PM2.5<sup>2</sup>

( 1)

SPM

( 1)

TEOM1400A

EPA

( 2) PM2.5

2.5μ m

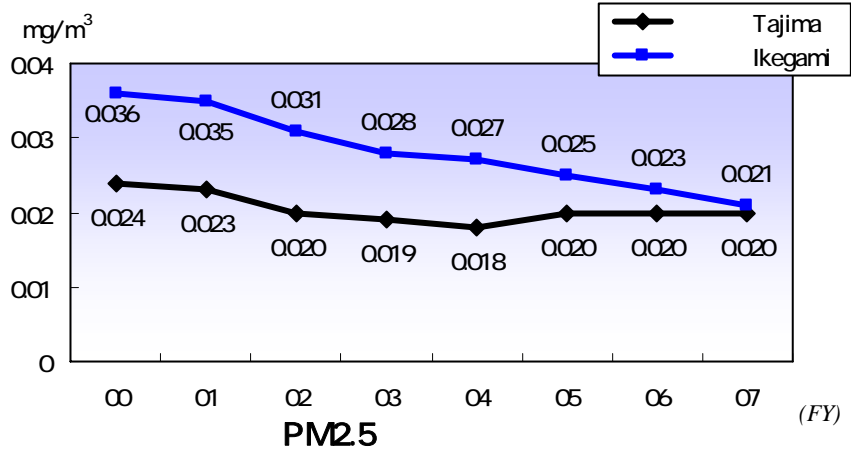
(Monitoring results of FPM)

PM2.5

1

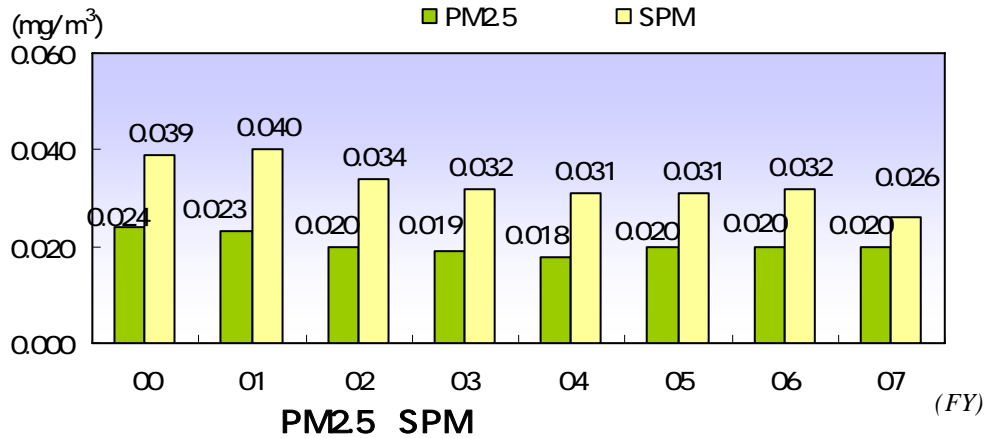
0.020mg/m<sup>3</sup>

0.021mg/m<sup>3</sup>

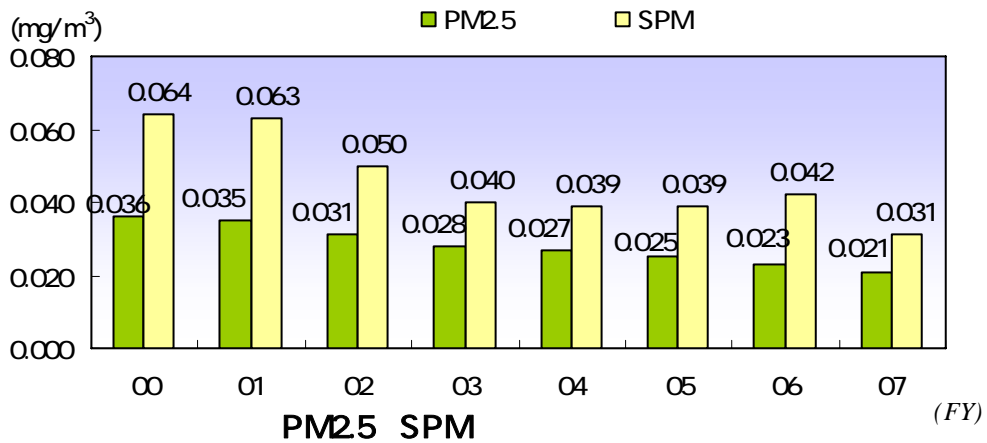


(Trend of PM2.5 Annual Average Concentrations)

PM2.5 100%      SPM 77%      2 68%      3      SPM



(Comparison with Annual Average Concentrations between PM2.5 and SPM : Tajima)



(Comparison with Annual Average Concentrations between PM2.5 and SPM : Ikegami)

### 1 PM2.5 SPM

Comparison with Measurement Results between SPM and PM2.5

(Monitoring Station)	(Monitoring items)	(Annual average)	(Maximum daily average)	2 2%-exceeded value of daily average)	1 (Maximum 1-hour value)
(Tajima)	PM2.5	0.020	0.058	0.047	0.102
	SPM	0.026	0.095	0.067	0.148
(Ikegami)	PM2.5	0.021	0.052	0.046	0.092
	SPM	0.031	0.097	0.069	0.170

EPA( ) PM2.5  
 24 35µ g/m³ 24 98 3  
 15µ g/m³ 3

Acid Rain

Monitoring points

1991 8

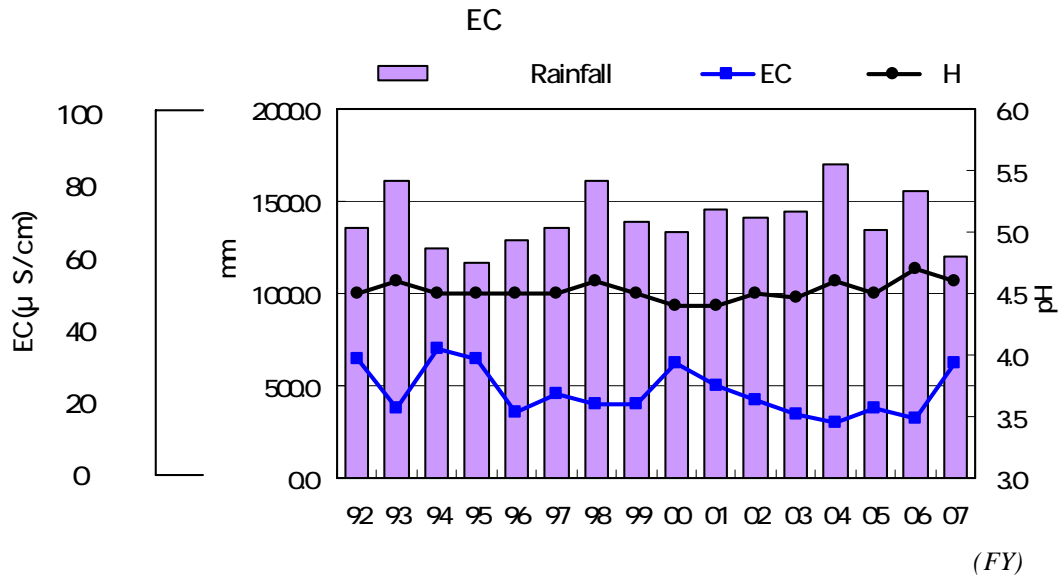
2003 10

Monitoring items

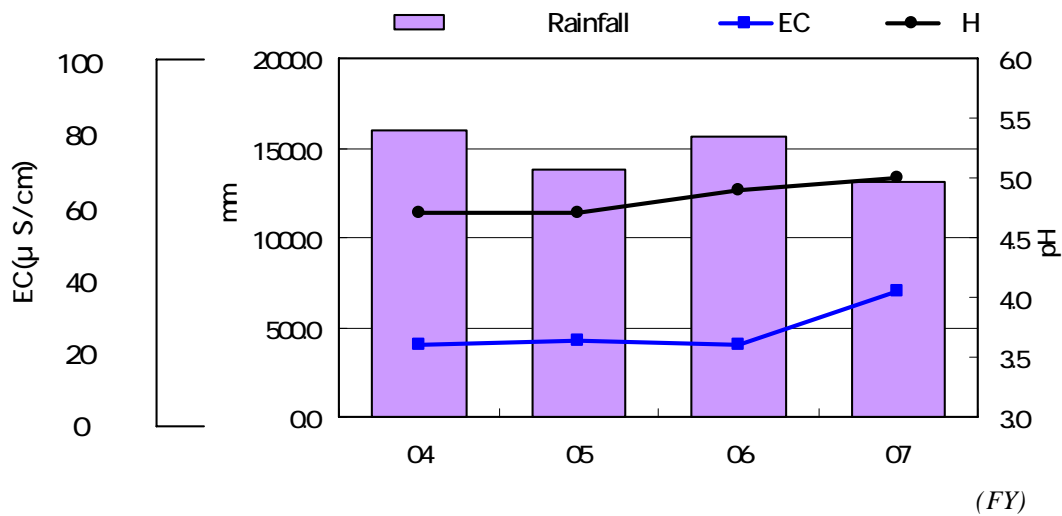
pH EC pH EC  
0.5mm

Annual average

4.6 EC 31 $\mu$  S/cm  
5.0 EC 35 $\mu$  S/cm



(Trend of annual average for pH and EC in Acid Rain:Asao)



(Trend of annual average for pH and EC in Acid Rain:Kawasaki Municipal Research Institute for Environmental Protection)

(Trend of annual average for pH and EC in Acid Rain)

		mm      EC $\mu$ S/cm							
(FY)		92	93	94	95	96	97	98	99
(Asao)	(Rainfall)	1361.0	1616.5	1241.0	1169.5	1287.5	1351.5	1607.0	1388.0
	H	4.5	4.6	4.5	4.5	4.5	4.5	4.6	4.5
	EC	32	19	35	32	18	23	20	20
(Kawasaki M.R.I)	(Rainfall)	-	-	-	-	-	-	-	-
	H	-	-	-	-	-	-	-	-
	EC	-	-	-	-	-	-	-	-

		mm      EC $\mu$ S/cm							
(FY)		00	01	02	03	04	05	06	07
(Asao)	(Rainfall)	1334.0	1451.0	1412.5	1440.0	1698.5	1341.0	1557.5	1197.5
	H	4.4	4.4	4.5	4.5	4.6	4.5	4.7	4.6
	EC	31	25	21	17	15	19	16	31
(Kawasaki M.R.I)	(Rainfall)	-	-	-	-	1599.5	1378.5	1566.5	1309.0
	H	-	-	-	-	4.7	4.7	4.9	5.0
	EC	-	-	-	-	20	21	20	35

1991 8

2003 10

Meteorology

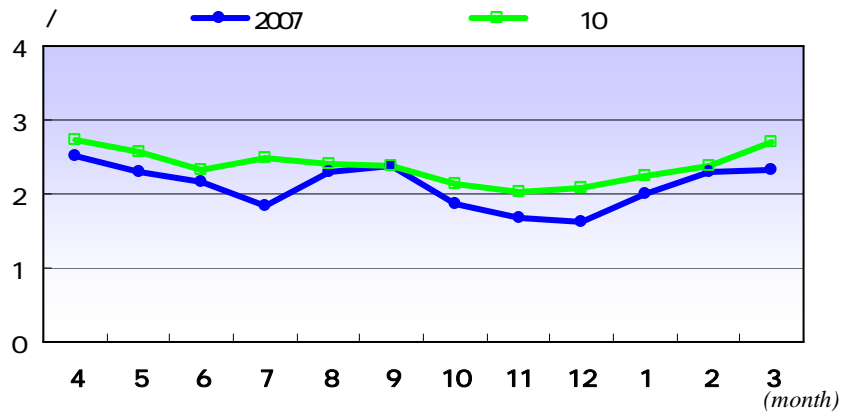
WD Wind direction

1(53 )

WS Wind speed

2 10 (1997 2006 )

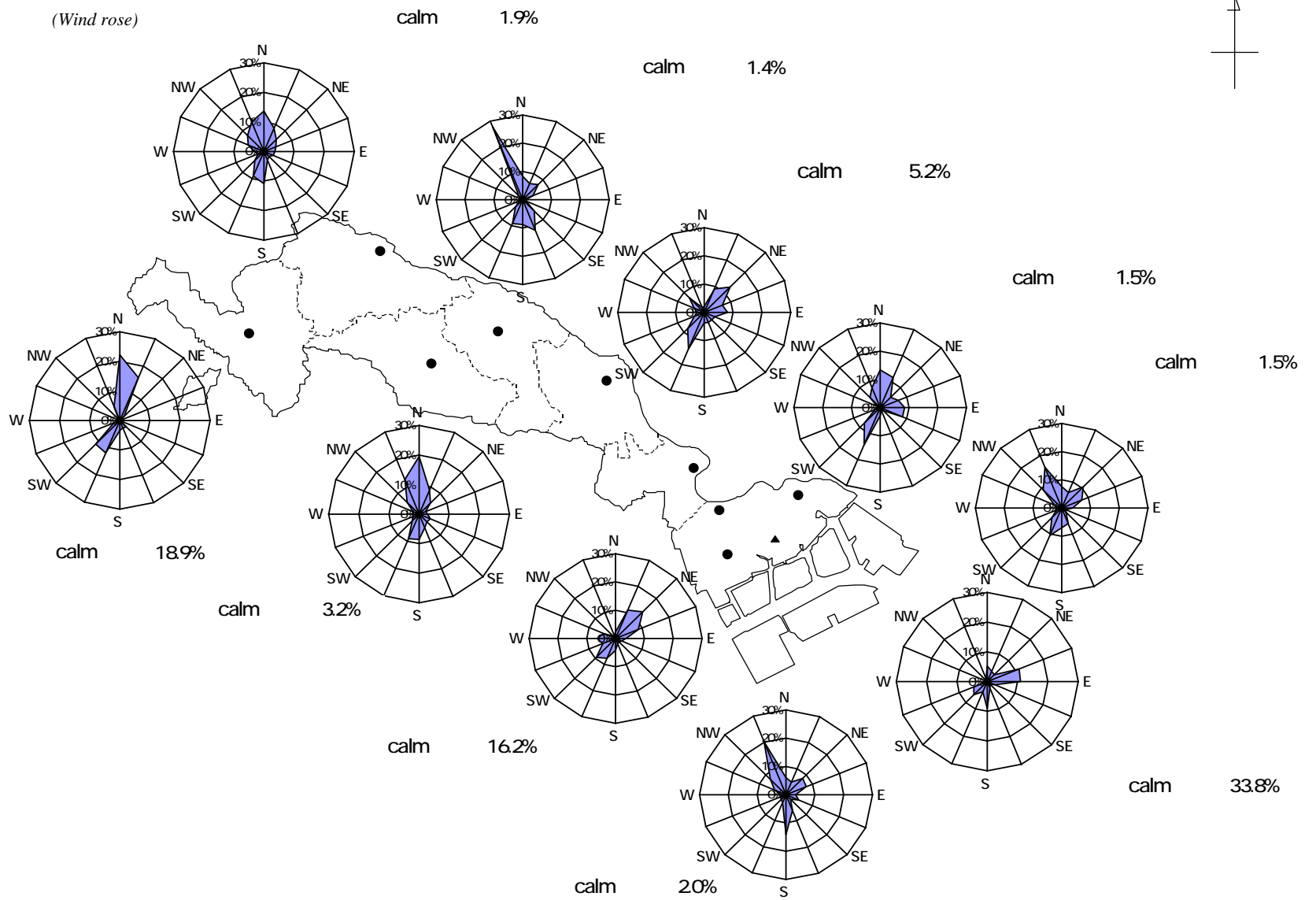
8 9 2



(Trend of monthly average for wind speed : General sta.)

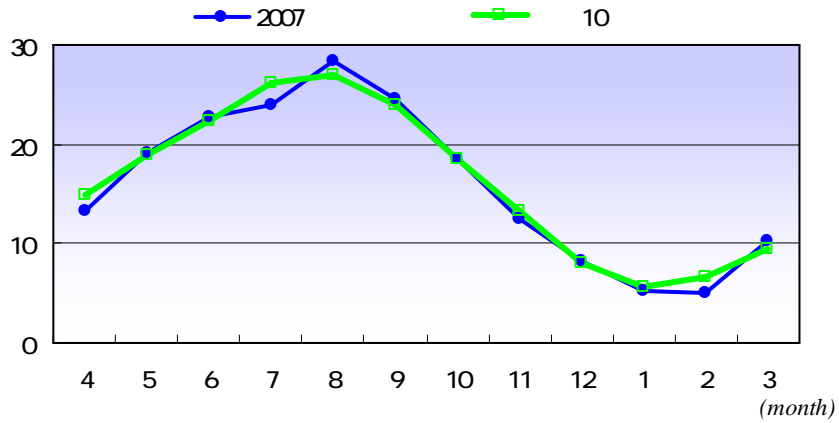
1

(Wind rose)



TEMP Temperature

3 10 (1997 2006 ) 8  
 7 2  
 2007 8 16 13 8 17 15  
 37.2 ( ) 56  
 2 14 5 6 -28 ( )  
 19



(Trend of monthly average for TEMP)

1

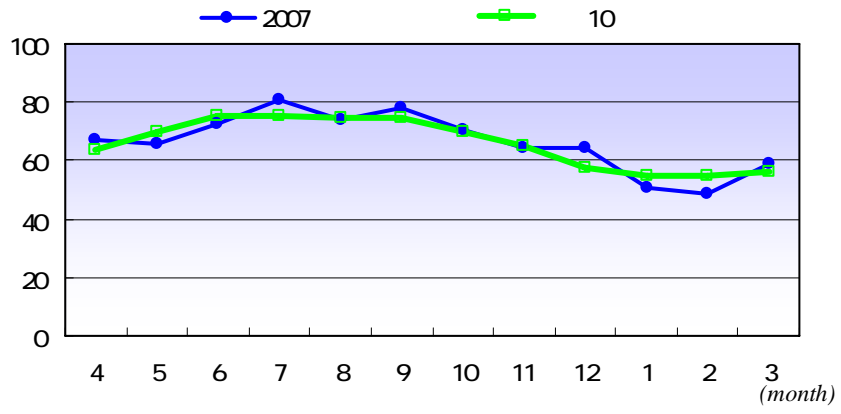
(Measurement Result for TEMP)

(Monitoring Station)	(Daishi)	(Tajima)	(Kawasaki)	(Saiwai)	(Nakahara)	(Takatsu)	(Miyamae)	(Tama)	(Asao)
(Average temperature)	16.2	16.2	16.3	16.1	15.9	16.2	16.0	16.0	15.3
(Maximum temperature)	35.9	35.9	36.0	35.8	36.8	36.8	37.2	37.2	36.3
(Minimum temperature)	0.0	-0.3	0.4	-1.1	-1.9	-1.0	-2.7	-2.8	-1.8
( )... 1 (Days that maximum temperature is above 30 )	36	41	41	41	46	48	56	55	44
... 2 (Days that temperature stays above 25 )	28	29	29	26	23	28	29	27	12
... 3 (Days that minimum temperature is less than 0 )	0	1	0	3	8	2	19	15	15

1 30  
 2 25  
 3 0

*HUM Humidity*

4 10 (1997 2006 )

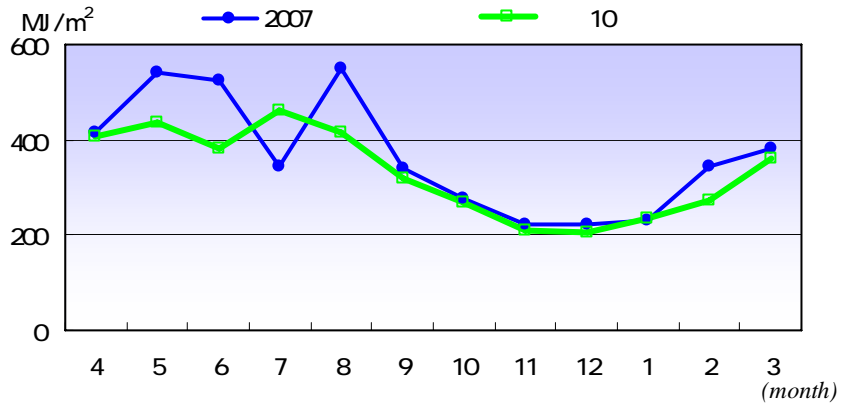


*(Trend of monthly average for HUM)*

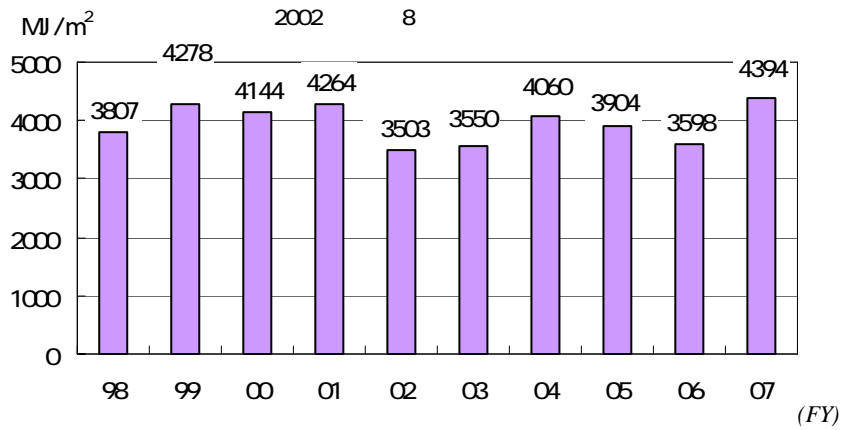


Quantity of insolation

5 6 8 7 5 10 6 (1997 2006 )  
 4394MJ/m<sup>2</sup>



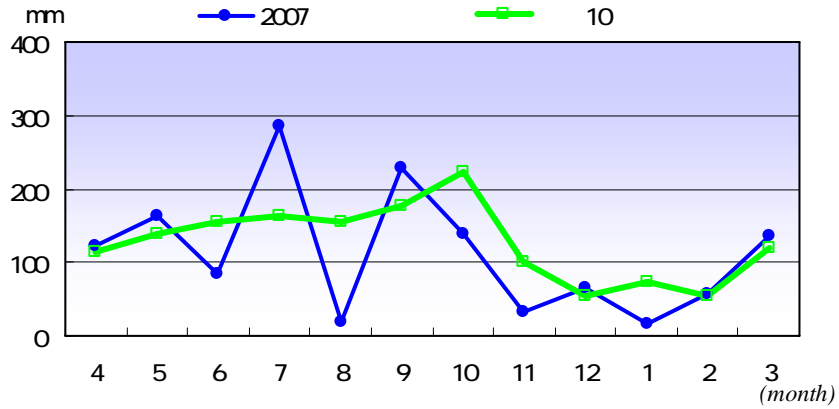
(Trend of monthly total quantity of insolation : Tajima)



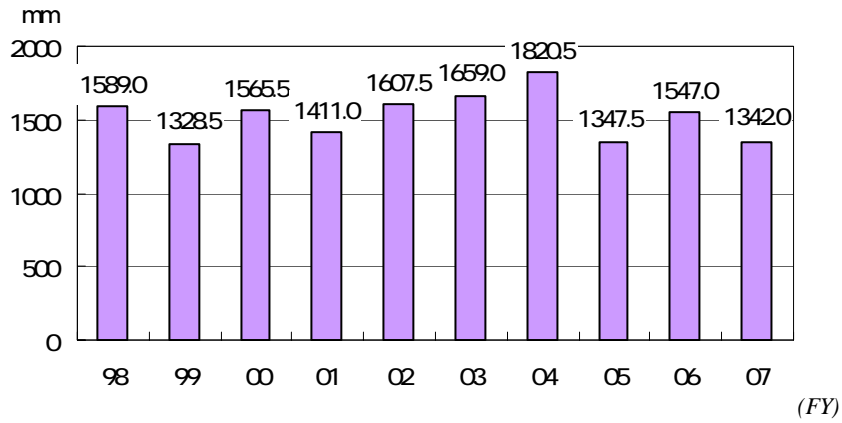
(Trend of yearly total quantity of insolation : Tajima)

RAIN Rainfall

7 6 8 10 11 1 7 10 (1997 2006 )  
 8  
 13420mm



(Trend of monthly total rainfall : Tajima)



(Trend of yearly total rainfall : Tajima)